

 Phoebe

# Messenger

News from Phoebe Ministries

Volume 106, Issue 2 | Fall/Winter 2025

## The Pets of Phoebe

**PLUS:** New  
Technologies,  
New Ways  
to Care

ANNUAL  
REPORT  
2024-2025



# Table of Contents

## PATHSTONES

- 14 Pathstones by Phoebe Celebrates  
10 Years of Aging with Confidence

## THE ART OF LIVING

- 4 The Pets of Phoebe  
16 Tom Dilts and the Pursuit of Giving  
18 Building Community Through Cooking:  
The Phoebe Berks Cookbook

## PHOEBE AT WORK

- 10 New Technologies, New Ways to Care  
12 A Year of Harvesting  
at Phoebe Organic Farm  
20 The Strength to Overcome:  
Covid-19 Five Years Later  
22 Faith in Action Rolls Out a New Look  
23 17th Annual Golf Tournament

## PHOEBE PHARMACY

- 24 Did You Know? Missed Medications

## ANNUAL REPORT

- 25 Introduction to the Annual Report  
26 A Message from the Executive Director  
27 Celebrating Generosity  
30 Phoebe's Impact at a Glance  
32 Governance and Leadership  
34 Financial Summary  
36 Thanking Our Partners

**On the cover:** Chestnut Ridge resident Ruth Powers and Harley.

**Editor's note:** Sadly, Harley passed away during final production of the *Messenger*.



*Phoebe-Devitt Homes is the official name of the 501(c)(3) not-for-profit corporation doing business as Phoebe Ministries. Founded in 1903 and incorporated as such in 1984, Phoebe-Devitt Homes is responsible for the supervision of communities, long-range planning, development, and fundraising for a network of retirement communities, affordable housing, pharmacies, and a continuing care at home program, which combined serve thousands of seniors annually.*

Phoebe Ministries is affiliated with the United Church of Christ and is a member of LeadingAge, LeadingAge PA, and the Council for Health and Human Service Ministries of the United Church of Christ.

The official registration and financial information of Phoebe-Devitt Homes may be obtained from the Pennsylvania Department of State by calling toll free within Pennsylvania at 1-800-732-0999. Registration does not imply endorsement.

Copyright 2025 by Phoebe Ministries. Photographs and artwork copyright by their respective creators or Phoebe Ministries. All rights reserved. No portion of this publication may be used or republished in any form without permission.

To unsubscribe from The Phoebe *Messenger*, please contact the Department of Marketing and Community Relations at 610-794-5132 or [marketing@phoebe.org](mailto:marketing@phoebe.org).

**Mission Statement:**

*A community of faith, called by God, to enrich the lives of our seniors, their families, and the communities we serve.*

**President & CEO:**

Scott R. Stevenson

**Phoebe Ministries**

**Governing Board Chair:**

William C. Hacker

**Editors:**

Teri Haddad, EdD

Dominic Trabosci

**Art Director/Design:**

Todd Greb

**Contributors:**

Aimee Basiura

Rachel Cavotta

Teri Haddad, EdD

Janet Hines

Lisa Hoffman

Kristine Paupini

Dominic Trabosci

## A MESSAGE FROM THE PRESIDENT

*Dear friends,*

From fireside chats with friends to relishing in life's little joys, we hope this issue of the *Messenger* brings warmth to your 2025 memories.

We've accomplished so many great things together this year, and we are excited to continue growing while serving our aging community with compassion and grace. We've expanded services and activities, introduced new technologies to support caregivers, and proudly supported 437 residents through charitable care. None of this would be possible without our donors, who we thank in this year's Annual Report.

In the following pages, you'll find stories of reflection and milestones. This year, we celebrate the 10th anniversary of Pathstones, a program that helps its members prepare for unforeseen health events by offering care coordination that allows seniors to remain in the home. Pathstones has remained a pillar of our mission to serve seniors dutifully and flexibly.

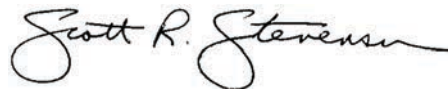
You'll hear from residents who live with their pets and the companionship fostered by that relationship. It's proof that pets can also be part of the Phoebe family, even if it's pet technology.

We are thrilled to share an update about Phoebe Organic Farm's first major harvest and the partnership between Phoebe Ministries and the Rodale Institute. Many residents of Chestnut Ridge have embraced the program, and ingredients have begun appearing in resident dishes. This innovative program marks an important step forward for us in sustainability and health.

As we look ahead, Phoebe remains focused on innovation, quality care, and empowering older adults to live fully. It is my honor to lead this organization into a future where aging is embraced, supported, and celebrated.

On behalf of Phoebe Ministries, thank you for being part of our family. We wish you and your loved ones a very happy holiday season and a new year filled with peace, health, and connection.

Peace,



Scott R. Stevenson  
President & CEO



Zibrio Balance Scale



# The Pets of Phoebe



Anyone who has ever owned a pet knows the value these lovable companions bring to one's life. Pets provide us with unconditional joy, comfort, and company. Their mere presence can be both comforting and fulfilling.

At Phoebe Ministries, we are happy to offer multiple pet-friendly campuses that improve the quality of life for our residents. Take resident Janet Mcilhenny and her 5-year-old dog Poe, for example.

Named after Edgar Allan Poe (and shortened to just "Poe" to reflect his small stature), the poodle bichon mix was two years old when Mcilhenny adopted him. It was love at first sight when they met each other's gaze.

One of Mcilhenny's favorite early memories of Poe was bringing him home and introducing him to her fenced-in yard in Allentown, PA.

"I swear his eyeballs almost fell out," says Mcilhenny. "He was so excited. To him, the yard was huge."

Mcilhenny rescued Poe after he spent six months on the streets of Philadelphia. Poe had been abused and neglected by

a previous owner, but the bond he and Mcilhenny built has helped heal his emotional wounds.

Since the two of them moved into an apartment at Phoebe Berks in 2023, Poe has become a rockstar on campus.

"Everyone loves Poe. They all come up and pet him," says Mcilhenny. Faces light up when people see Poe trotting along; many residents know him by name. Timothy Laffey, receptionist at Phoebe Berks, delights Poe with a treat whenever he stops by the lobby.

Although the switch from a house to an apartment has been jarring for the two of them, Poe and Mcilhenny have made do with the Phoebe Berks' neighboring trails in lieu of a backyard. The lightly wooded paths provide a quaint and shady option for them to get their walks in for the day.

And walk they do. Poe and Mcilhenny operate on a regimented schedule, one that Poe has memorized. It involves at least three miles of walking, specific sleeping spots, meal times, and a beloved morning ritual in which Poe places himself on the windowsill and surveys the people, pets, and cars below for at least half an hour.



*Phoebe Berks resident Janet Mcilhenny cradles her dog Poe like a baby, a position that Poe has come to love, as evidenced by his smile.*

Walking is particularly vital to Mcilhenny, whose history of strokes and other health concerns has made getting around somewhat difficult. These moments with Poe on the walking trails are not only a bonding experience but also a legitimate form of therapy for Mcilhenny. Her resilience is inspiring.

In much the same ways that Mcilhenny helped heal Poe from his past, Poe helps heal Mcilhenny through activity.

By contrast, even though resident John Weber of Phoebe Allentown relies on a wheelchair to get around, he still enjoys regular walks with his 14-year-old dog Paco. Exploring the local area with Paco is a great way for Weber to enjoy their home at Phoebe.

A chihuahua/pug mix, Paco was adopted at 8 years old while Weber lived in Emmaus, PA. A small but vocal dog, Paco is intimidated by larger dogs but excited by knocks at the door from new guests to meet.

“He loves people,” says Weber. Paco’s love is doubled for Weber’s daughter, who occasionally comes to collect Paco. When Paco isn’t in the apartment, Weber feels that absence. It’s safe to say that Paco has become a part of life at Phoebe for Weber.

On instances when Weber’s daughter stops by the apartment when Paco isn’t there, Paco picks up on her scent when he returns. It’s a testament to the power of Paco’s nose and his love of family.

Paco has grown increasingly independent and solitary with age, but the love between him and Weber hasn’t waned. Paco cries at the door when Weber leaves, making his eventual return much sweeter.

Taking a walk on the feline side is Phoebe Allentown resident Eleanor Miller with her cat, Ellie.



*Dogs were excited about the opening of the new Dog Park at Chestnut Ridge.*

Ellie, now 10 years old, was adopted by Miller from her local veterinarian's office. Like most new cats, Ellie was rather timid around Miller for the first few weeks, spending a lot of time hiding.

Today, however, Ellie is a social butterfly who greets guests with friendliness and curiosity.

Miller has always been a cat lover, so finding a home where she could have a cat was essential. Ellie's independent nature makes it easy for Miller to take advantage of campus activities without worrying about taking her pet outside.

Ellie often sleeps on Miller's lap at night in their recliner, but she's an acrobat in the morning. She enjoys water from the sink tap and will watch Miller do the dishes. Then, she'll hop from the kitchen counter to the living room table and onto the couch.

Having that constant friend has helped Miller combat moments of loneliness.

"Even though she can't answer, I talk to her," Miller laughs. Their connection has brought Miller deep comfort and companionship over the years.

*Newly printed signs line the perimeter of the Chestnut Ridge Dog Park.*



Meanwhile, at Chestnut Ridge at Rodale, residents take advantage of the campus' dog park and dog washroom. The former has recently been fitted with new signs and two distinct areas for small and large dogs, while the latter provides a sanitary and convenient way for dog owners to get their furry friends looking and smelling their best.

Christine Widgren and her three-year-old dog Chula (Spanish for "cute") live at Chestnut Ridge and are excited to use the dog park now that the infrastructure is complete. Like Poe at Phoebe Berks, everybody at Chestnut Ridge knows Chula.

"She's like an ambassador," laughs Widgren.

When therapy animals can't be on campus, robotic animals provide a great alternative. Phoebe's robotic animals come from Joy For All, which feel, look, and sound like real animals.

According to the University of Plymouth, robotic animals have been found to reduce symptoms of depression and delusion when compared to those living without them. Another study from the Journal of Holistic Nursing

found that loneliness was decreased significantly among senior citizens with dementia when robotic animals were incorporated into care.

A trip to Phoebe Richland's memory care unit provides a few great examples of this. Resident Ruth, for instance, has a "cat" whom she always greets when coming home to her apartment. Though the animal is robotic, it provides her valuable company, and Snyder talks to her and feeds her like any other cat.

"She's a good girl," she says. Ruth's cat is accompanied by a teddy bear, whom she says her cat had to "warm up" to at first.

Another resident of Phoebe Richland, Barbara, has a "cat" that rarely leaves her lap. Barbara's mobility restrictions make a robotic animal a perfect compromise to a real pet, as it offers companionship in a portable, accessible package.

Several Phoebe campuses also feature lobby pets for residents who don't wish to bear the responsibility of a pet but still want a friend to interact with.

**Research has shown that simply petting a dog or cat lowers stress, which is why therapy animals have become such a widespread tool in addressing mental health concerns. Phoebe will often invite therapy animals from the local community to its campuses.**



*Above: Phoebe Allentown resident Eleanor Miller's cat, Ellie.*

*Left: Phoebe Richland resident Ruth smiles with her robotic pet cat.*



These animals happily greet guests as they come in and range from birds to fish. Stopping to say “hi” to these delightful creatures is a highlight for many of our staff and community members.

Even when residents aren’t greeting lobby pets, another resident’s pet making its way around campus is always good for a smile. The presence of resident pets is an instant mood booster.

We know the pets of Phoebe bring light and joy to the lives of our residents. As long as our community benefits from having pets, we are happy to have them. *Now that’s paw-fect!* 🐾

To learn more about Phoebe, visit [phoebe.org](http://phoebe.org).

**Right:** Chestnut Ridge resident Fran Kline and Katie.

**Bottom:** Birds welcome visitors to many of Phoebe’s campuses and are a welcome friend to residents.



# New Technologies, New Ways to Care

Over the past year, Phoebe adopted many exciting new technologies to keep innovation at the forefront of our care. These fascinating innovations allow us to deliver the most effective services possible while maintaining compassion at the core of our mission.

In our last issue of the *Messenger*, you read about how our new **Tovertafel Memory Table**, an interactive game console built specifically for seniors living with dementia, marks an important step forward in our memory care program. The table increases brain activity through fun, interactive activities while decreasing stress, negative emotions, and restlessness.

Many residents have also tried our virtual reality headsets from **Rendever**. These headsets offer a simple and easy-to-use form of virtual reality that allows residents to be transported to new places. Now, our residents with reduced mobility can explore the world in the blink of an eye when physical traveling becomes difficult.

Recently, we've rolled out the **Zibrion balance scale** to all campuses. Supported by NASA-grade technology, the scale has residents stand as still as possible for 60 seconds while it measures minuscule movements. Then, the resident is given a score out of 10 based on their likelihood of falling within a year.

From there, therapy services at Phoebe can use that data to determine if a resident needs extra care to address balance concerns. It is our hope that this will help our residents stay safer longer.

Similarly, an in-home A.I. system from **Inspiren called AUGi** (short for Augmented Intelligence) will help caregivers at Phoebe prevent falls when they can't be inside the resident's home.

AUGi is placed inside the home and learns a resident's movement tendencies. It does this by representing the



Rendever VR Headsets



Zibrion Balance Scale



Inspiren AUGi



Wicked Sheets

resident as a stick figure through radar motion technology. For privacy reasons, it does not have video recording capabilities.

Based on what the system has learned in the training period, it can predict a potential fall when analyzing how a resident moves before they get up. The system will then alert a caregiver to a potential imminent fall, and they can reach the resident before it happens.

AUGi will roll out to memory support neighborhoods across Phoebe. This technology, combined with the Zibrio scale, gives caregivers more tools to minimize falls.

Lastly, we've also begun offering smart bedsheets from **Wicked Technologies**, which notify caregivers of incontinence events. These Wicked sheets detect moisture and quicken staff response time in the event of an accident.

Wicked sheets will be offered as an optional package for Phoebe residents.

These technologies make us more responsive, resulting in better care and quality of life for our residents.

We are so excited to incorporate these new innovations across our organization. Phoebe is committed to remaining at the forefront of quality senior services; these latest developments are just one way we do so. ☘

# These technologies make us more responsive.

*Chestnut Ridge Wellness Coordinator Debbie Rose uses the Zibrio Balance Scale to check resident Ruth Powers' stability.*



# A Year of Harvesting at Phoebe Organic Farm

Since the groundbreaking of Phoebe Organic Farm on November 6, 2024, the partnership between the Rodale Institute and Phoebe Ministries has been warmly embraced by Chestnut Ridge residents as fresh food makes its way to the campus. Over the past year, the farm has undergone its first few major harvests and is now winding down for the winter.

In the summer, Phoebe Organic Farm was at its greenest. Between last November's groundbreaking and the hottest months of this year, the farm exploded in color and volume. Rows upon rows of crops were arranged and organized into distinct sections for different crop types.

This year, Phoebe Organic Farm relied on the Rodale Institute's Kutztown location for early seedings while the greenhouse at the farm remains under construction. A series of seeding events were held in the spring, during which residents could spend a morning at the Rodale Institute's pristine campus while learning about planting through hands-on activities.

Though the restoration of the greenhouse is still being carefully considered due to the historical legacy of the property (also known as "Founder's Farm" in recognition of the Rodale Institute's beginnings), the current plan is for seedings to begin on location in the summer of 2026.

"[The Rodale Institute] wants to restore the greenhouse in a way that does justice to the property, the history, and Phoebe," says Phoebe Organic Farm Manager Jennifer Smith (a.k.a Farmer Jenni).

Smith says she feels the land's historical power whenever she sets foot on the farm: "It feels so special here." With Rodale being a national leader in organic farming, Phoebe Organic Farm aims to continue the institute's legacy. Founder's Farm is even recognized on the National Historical Society list.

Phoebe Organic Farm's first full year was a successful one. Harvesting days were typically scheduled on Mondays, Tuesdays, and Wednesdays, with deliveries to Chestnut Ridge every Wednesday. Smith herself drives a van full of crops to Chestnut Ridge, where residents eagerly await her.

The farming season typically ends around late October and early November, though the biggest indicator of when it's time to stop is the first frost. Frost usually decimates whatever crops are being grown. That's when Smith and her team remove everything from the fields and plant cover crops to enrich the soil for the next few months.

Winter gives Smith and her team time to organize equipment and machinery. It's also a time of intense planning and supply gathering.

"Once you're back in it, you just go," says Smith.

Another highlight of the year has been the opportunity for residents to arrange flower



Rows of crops stretch across Phoebe Organic Farm.





*Farmer Jenni holds up a freshly plucked handful of potatoes.*



bouquets. Phoebe Organic Farm has grown wonderfully vibrant flowers, and Rodale has offered on-site and off-site arranging sessions for those who want to assemble a bouquet and brighten up their homes.

So much has been produced that the farm has started delivering to Phoebe Allentown and the Phoebe Apartments with a goal to eventually expand to Phoebe Berks. Soon, Phoebe Organic Farm will work to address food education and inequity, particularly for our residents in affordable housing.

As for the food itself, some of the most popular ingredients for residents of Chestnut Ridge this year were snap peas, broccoli, tomatoes, potatoes, lettuce, and onions.

“The residents are really excited to see fresh produce there,” says Smith.

Smith hopes that projects like Phoebe Organic Farm, as well as many more opportunities to educate the public, will strengthen the hold of organic farming and eating on our culture.

“The newer generations are way more aware of what’s in our food and what we’re putting in our bodies,” says Smith. “I think that there is more of a commitment to eating organic. That can only translate to the older generations because they have grandsons and granddaughters saying, ‘This is why I do this.’ It allows

for a bridging of that generational gap.”

Organic, regenerative farming is not just good for the planet.

Eliminating harmful additives and chemicals from our crops also means food grown with greater nutritional and safety values. Rodale has actively pushed this movement through partnerships with educational institutions and political lobbying.

“We want to make eating organic as easy as fast food because that’s what people are used to,” says Smith. “People go for ease.”

Phoebe shares Rodale’s passion for sustainability and health as we continue to take care of our aging population.

“I believe Rodale is a unique, amazing organization,” says Phoebe President & CEO Scott Stevenson. “They are world leaders in their areas of expertise and have an international impact in their field.”

Stevenson also notes that the deep love and connection to our local community has tied Phoebe Ministries and the Rodale Institute together. It will be amazing to see what the two organizations can accomplish together as we build a greener future. 🌱



# Pathstones by Phoebe

## Celebrates 10 Years of Aging with Confidence



Ten years ago, Phoebe Ministries launched Pathstones by Phoebe—a bold, innovative program empowering older adults to age in place with confidence, flexibility, and peace of mind. Since then, over 134 members have embraced this unique blend of wellness coordination and care navigation. Pathstones benefits its members by allowing them to remain independent and in their own homes while offering the security of a continuing care retirement community.

“People want to age in place,” says Lisa Hoffman, Executive Director of Pathstones. “Most will need care, but few plan for it. That’s where Pathstones steps in—with trusted guidance and lifelong support.”

Pathstones helps members build realistic care plans and can fill gaps left by traditional medical and long-term care

insurance. At the heart of the program are dedicated Wellness Coordinators who stay connected, promote healthy living, and coordinate services when needed.

“We’re not just care planners—we’re companions on our members’ journeys,” says Mimi Leinbach, Sr. Wellness Coordinator. “We get to witness incredible transformations.”

“Our members are trailblazers,” Hoffman says. “They chose a future on their own terms and now they’re showing others the way.”

Don and Alison Seibert became Pathstones’ first members in September 2015.

“When we first became aware of the Pathstones program, we knew it was the right decision for us as we had been

*Pathstones' first members, Don and Alison Seibert.*





*Freedom to remain in their home is important to Jerry and Carolyn Holleran.*



*Mimi Leinbach, Sr. Wellness Coordinator.*



*Lisa Hoffman, Executive Director.*

exploring other options for aging in place,” says Don. “We viewed this as the best way for us to preserve assets for our family and relieve them of the burden of caring for us. We appreciate the contact with the Pathstones staff as they monitor our wellness checkups, and we enjoy the various social and educational events offered during the year.”

Members like Carolyn and Jerry Holleran feel that Pathstones has helped keep all their alternatives open. They have the freedom to remain in their home, but appreciate that the option of a retirement community like Phoebe is there for them. Marilyn Wademan and Ed Kershner find that membership in Pathstones has provided them with the plan they knew they needed for aging. With Pathstones, they can stay in the home they love and still be able to host family and friends.

From healthier habits to renewed purpose, members often report life-enhancing changes. One member shared how her husband became more active and health-conscious after joining the program. Pathstones had helped him realize the importance of taking the best care of himself.

Over the years, strong partnerships, especially with Comforting Home Care by Phoebe, have kept services

seamless. New technology and concierge services like Dorvie offer even more support—from fall detection to lawn care—ensuring members can thrive at home.

“We see people in their 70s and 80s living fully—gardening, biking, caring for grandkids,” says Leinbach. “They’re aging—but they’re also inspiring.”

As Pathstones looks to expand beyond Lehigh, Northampton, and Berks into Bucks and Montgomery counties, its mission remains strong.

“Pathstones has become a shining example of Phoebe’s commitment to innovation and compassionate care,” says Scott Stevenson, President & CEO of Phoebe Ministries. “Here’s to 10 amazing years—and many more to come.”

**If you would like to learn more about how Pathstones can help you age in place with confidence, please call 610-794-6700 or visit [pathstonesbyphoebe.org](http://pathstonesbyphoebe.org).**



Tom Dilts enjoys volunteering at Phoebe events such as the Century Circle socials.

# Tom Dilts and the Pursuit of Giving

Every year, the Office of Philanthropy helps organize Century Circle Socials at each major Phoebe location. These socials are our way of saying “thank you” to our Century Circle donors who support Phoebe with \$1,000 or more each year. Tom Dilts is one such selfless individual.

At these events, residents and donors mingle in a meaningful and fun environment featuring entertainment, prizes, and food. Dilts has been regularly attending Century Circle Socials for some time now. The Office of Philanthropy reserves a seat for him and other donors with nametags, but you won’t find Dilts in his assigned seat.

Instead, he walks around the room, talks to residents, and lends a hand in running the event. The nametag and seat are mere suggestions. Dilts would much rather donate his time by scooping ice cream, serving drinks and snacks, and assisting with games—all in the pursuit of engaging with and giving back to the community more than he already has.

“Most organizations, when you give money, invite you to a cocktail party, a dinner, or a golf outing,” says Dilts. “Phoebe invites me to an assisted living facility to celebrate with residents. This is my kind of organization. I don’t want the dinner and all the other things. This is what I want: The chance to sit down with people, see how they’re doing, and be helpful in the process.” Dilts is also a Legacy Society member (those who have left a gift to Phoebe Ministries in their will or trust).

Dilts has held volunteer work, philanthropy, and community prosperity close to his heart for his entire life. As a lawyer, he worked for a major New Jersey law firm before opening his own private law office just 10 miles from where he grew up in Three Bridges.

Dilts began as a lawyer of general practice but would later become a New Jersey Superior Court Judge in 1991, where he oversaw cases of domestic violence, divorce, child abuse, and juvenile delinquency. His passion for helping people through such difficult life events has led to instrumental leadership in New Jersey’s

*“Phoebe invites me to an assisted living facility to celebrate with residents. This is my kind of organization.”*

—Tom Dilts

Domestic Violence Program. For 15 years, he also taught judges how to avoid gender discrimination in law.

In 2011, at age 63, Dilts retired from his Superior Court position to focus on mediation and pro bono work. Around this time, 15 of Dilts’s friends joined him in creating the Children’s Hope Initiative, an organization that supports programs and services for children of abuse and neglect. Dilts would also become the co-chair of the NJ Domestic Violence Fatality Review Board, a position he holds to this day.

Dilts’s career has revolved around helping others, but this drive didn’t stop once he arrived at Phoebe. He moved to Chestnut Ridge at Rodale in 2024 after his wife’s passing. One of his primary goals in retirement was to continue to give thanks to the community for the privilege of being a judge.

One way he did this was by offering a genealogy service to his fellow residents. Dilts, along with five other skilled Genealogists at Chestnut Ridge, put out a call for residents to learn more about their family ancestry. The group would then gather information from said residents and return with a richer and more thoroughly researched history of that resident’s family.

“It’s been very rewarding,” says Dilts.

Dilts is also a founding member of the Photography Club at Chestnut Ridge. Currently comprised of 14 residents with varying levels of experience, the group aims to educate, practice, and share photography with the community. Dilts’s apartment is lined with his own impressive photos from years of travel.

In addition to his deep religious and social involvement, Dilts’s time at Chestnut Ridge has opened the door to many new hobbies and interests. He taught himself to play piano and learned Mahjong from his fellow residents. He takes pride in being active and cherishes the lunches and billiards matches with his friends.

Dilts is also a Pathstones member, which has given him the peace of mind to continue living the way he wants to: from taking care of the plants on his balcony to traveling.

“It just makes financial sense as a health supplement,” says Dilts. Pathstones is ready to support Dilts should a health event occur.

“Phoebe Ministries provides a wonderful service for hundreds of people,” says Dilts. “It seems to me that people who are able should be making a contribution so that programs can go on into the future. It’s a worthy ministry. It’s good people doing important work for the right reasons.”

Phoebe Ministries is incredibly grateful to have the generous support of Tom Dilts and our many other donors. If you would like to join Tom Dilts in donating to Phoebe in support of quality senior services, please visit [phoebe.org/donate](https://phoebe.org/donate). ☸

**If you feel inspired by Tom's story and would like to donate to Phoebe, please visit [phoebe.org/giving](https://phoebe.org/giving).**

*Tom Dilts stands proudly in front of some of his framed photographs.*



Building Community Through Cooking:

# The Phoebe Berks Cookbook

**Top:** A close-up of resident Barbara Esterly's Peach Cream Pie.

**Right:** Esterly showing off her baking skills.

Food often brings people together to form emotional connections and lifelong memories. With this spirit of community, Phoebe Berks' independent living staff and residents decided to compile their very own cookbook starting in January 2024. *The Phoebe Berks Campus Independent Living Residents' Cookbook* features recipes old and new from residents across the campus. For many contributors, these recipes bring joy to friends and family and are meant to be shared.

Led by former Independent Living Manager Robin Staudt, this 152-page cookbook took a year to complete. For help with the project, Staudt reached out to two residents, Jean Boyer and Ramona Bruch, who helped organize and compile each recipe. Alicea Rodig, Lifestyle Assistant, and Staudt began the process by reaching out to residents through campus newsletters and word of mouth.

Once they received their first submissions, both Boyer and Bruch got to work as editors. They began by creating the categories, including appetizers, breakfast, soups, and more. After establishing the categories, they retyped and formatted

the pages, adding photos, cooking tips, recipe jokes, and quote pages. When the final reviews were complete, the cookbook was ready to be printed and shared with the Phoebe Berks community.

To each contributing resident, the cookbook means a little something different. For resident contributors Susan and Mel Blum, sharing recipes brings joy and connects them with family and friends.

"Cooking for family--that's what food is all about," says Susan. "My husband and I really enjoy cooking together, and our family enjoys coming over to our Phoebe Cottage for meals together." The Blums collaborate when cooking together, finding new ways to make each dish unique to their tastes.

As Phoebe Berks Cottage residents, the Blums enjoy the ease of use their beautiful space offers. They often share deliciously crafted meals in their sunroom. As welcoming hosts, they



The front cover of the Phoebe Berks Cookbook.

frequently invite their fellow Cottage neighbors over for appetizers, drinks, charcuterie boards, and other homemade treats.

Another contributor, Phoebe Village resident Barbara Esterly, was eager to share 11 delicious recipes. As an avid baker, Esterly often shares her baked goods with the other residents on her floor, stopping by to chat and befriend her neighbors.

Food connects her not only with friends and neighbors, but with loved ones in her past. One recipe she has a deep connection with is shoefly pie. Esterly explains, “My mother was a great shoefly pie baker. Whenever I make a shoefly pie, I always think of her.”

As a historic baking and cooking educator, Esterly wanted to submit her favorite 100-year-old crumb cake recipe for the cookbook. She often works with local historical sites, such as Daniel Boone Homestead in Birdsboro, Pennsylvania, and Johanna’s Furnace Historic Site in Morgantown, Pennsylvania, where she demonstrates historical cooking and baking techniques to the public. For her, sharing these techniques and creating an immersive, historically accurate experience helps connect herself and others with people of

the past while highlighting the skill and labor that went into what was simply considered “women’s work” at that time.

Each recipe in the *Phoebe Berks Campus Independent Living Cookbook* is not only delicious but also contains the potential for connection with others in the community.

Sharing a meal is a simple way to make friends, remember the past, and even spend quality time with loved ones. ☘



To learn more about the wonderful community at Phoebe Berks, please visit [phoebe.org/berks](http://phoebe.org/berks).

Susan and Mel Blum share a homemade meal in their Phoebe Berks Cottage.





*The Grief Mosaic at Phoebe Berks was designed to help residents and staff express their feelings about the pandemic.*

# The Strength to Overcome: Covid-19 Five Years Later

For caregivers worldwide, the pandemic shook up daily routines and led to a massive pivot towards containing the spread of the virus and protecting our most vulnerable populations. For senior communities like Phoebe’s, the increased risk to older adults meant that Phoebe staff were tested to their limits to keep as many people safe as possible.

That’s why, five years after the height of the COVID-19 pandemic, we take this moment to reflect on how the world changed, what we’ve learned from this experience, and how the Phoebe community came together to push through.

“It was surreal,” says Cathy Bendel, MDS Coordinator at Phoebe Richland. “It’s hard to even fathom what was happening.” As the world learned about the coronavirus and how it spread, health care professionals had to adapt to new protocols to meet community needs.

“We were running all day,” says Phoebe Allentown Facility Administrative Assistant Linda Plunkett. One challenge was keeping protective equipment like masks, gloves, and hazard suits in stock. Refusing to sacrifice the safety of the community, hardworking staff like Plunkett contacted neighboring towns and cities to gather fabrics for masks. Plunkett herself would make extended trips just to gather said fabrics. Those masks were then hand-sewn by staff, residents, and the community to limit the spread.

“You did whatever was required,” says Phoebe Allentown Nursing Administrative Assistant Bobbi-Jo Novogoratz. Staff often worked longer shifts, and responsibilities morphed into one another. The commitment of Phoebe’s caregivers to their residents during this time was astounding.

“During that time, it was critical for leadership to focus on staff and how to support them better,” says President &

CEO Scott Stevenson. “We tried to provide the most supportive culture possible.” It was an “all hands on deck” scenario by every measure.

“The people that were here wanted to be here,” says Novogoratz.

The local community came together in ways that helped Phoebe and other facilities get through these difficult moments. Alcohol distilleries produced sanitary products, health care facilities communicated with each other about supplies, and local businesses donated food and candy.

Even with a united community, the physical and emotional loss associated with the pandemic could not be ignored.

Out of an abundance of caution, visits from family members took on a new form. At Phoebe Allentown, visiting booths were created to keep families physically separate but still able to interact with each other. Plunkett took on the responsibility of scheduling said visits.

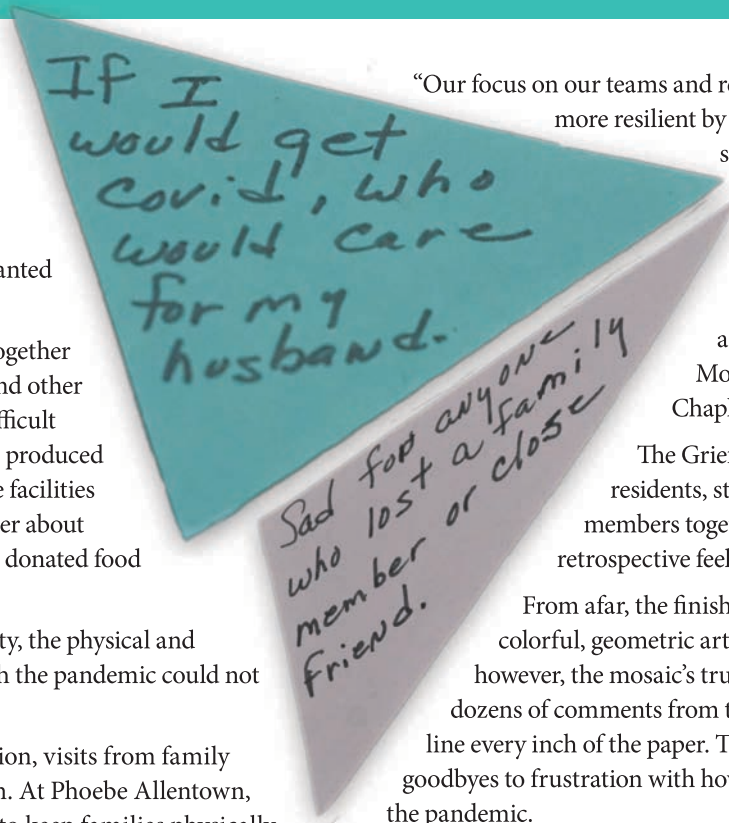
The visitation booths provided sufficient safety while attempting to avoid the dark realities of isolation on mental health.

“There were lots of tears at those booths,” says Novogoratz.

The loss of life was another unfortunate reality for people everywhere. Novogoratz remembers being invited to a resident’s family-only funeral, illustrating the deep connection between caregiver and patient. It’s not uncommon for residents to see Phoebe staff more often than their own families. That resulting bond is invaluable to both parties.

When asked if Phoebe and the world at large have emerged more resilient than before, former Vice President of Health Care Services Michell Staska-Pier doesn’t hesitate: “Absolutely.”

While we are far from weekly COVID tests for all employees, Phoebe has since established strategies and the battle-tested readiness to tackle another potential outbreak more efficiently. Today, Phoebe employs thorough contact tracing and testing if a resident contracts coronavirus. The threat of infection is met with the utmost care.



“Our focus on our teams and residents has helped us become more resilient by understanding how to better serve them,” says Stevenson.

That trauma extends to Phoebe residents as well. The complex emotions that come with trauma have been artfully captured in a Grief Mosaic led by Phoebe Berks Chaplain Tracey Marx.

The Grief Mosaic project brought residents, staff, volunteers, and family members together to share their complex, retrospective feelings following the pandemic.

From afar, the finished product appears to be a colorful, geometric art piece. On closer inspection, however, the mosaic’s truth is revealed. Dozens upon dozens of comments from the Phoebe Berks community line every inch of the paper. They range from heartbreaking goodbyes to frustration with how world leaders handled the pandemic.

“One way to help manage difficult emotions is to articulate them,” says Marx. “When you share those feelings with others and use them to create something artistic, the power of the grief can diminish. When we heard from others who were experiencing feelings much like ours, we were able to remember that we are not alone.”

Through it all, Phoebe pushed on. From staff to volunteers, the community came together in the face of one of our most difficult challenges.

We thank everyone who helped our organization through the pandemic. Our community pushed through because of our shared responsibility and compassion towards one another. To the families who lost a loved one as a result of the pandemic, we wish your family peace and healing.

May we learn from the past and continue on with resilience. 🙏

For more stories about Phoebe and our talented staff, please visit <https://phoebe.org/news-and-events/>.

*“We tried to provide the most supportive culture possible.”* —Scott Stevenson, President & CEO



The nursing staff at Phoebe Richland shows off their Faith in Action pride.

# Faith in Action

## Rolls Out a New Look

At Phoebe Ministries, faith isn't just what we believe—it's what we do. The Faith in Action Plan honors team members who bring Phoebe's values to life each day.

**Accountability** drives us to act with purpose and responsibility.

**Compassion** guides every word and gesture, reminding residents they are loved and seen.

**Ethical Conduct** and **Integrity** keep us honest, fair, and true to our mission.



Inspired by the **Fruit of the Spirit**, we live out love, joy, peace, patience, and kindness in every interaction.

Through **Respect**, we value every person with dignity and grace.

And with **Stewardship**, we manage our resources wisely to ensure Phoebe's legacy endures.

Because at Phoebe, faith isn't just belief—it's action. Live Fully, Live Phoebe. ☦

To learn more about our Faith in Action, please visit [phoebe.org](http://phoebe.org).

2025

# Phoebe's 17<sup>th</sup> Annual GOLF TOURNAMENT

This year's Phoebe Golf Tournament proved once again how spectacular it can be when the community comes together in support of senior services.

Phoebe is proud to share that our 17th Annual Golf Tournament grossed over \$253,000 thanks to the 300 attendees (224 golfers) and the generous support of our sponsors. The tournament is our biggest fundraiser of the year, which supports our Charitable Care program. Funds directly benefits eligible residents in our community who have exhausted their resources amidst rising care costs.

Last year, Phoebe provided over \$16 million in support of our Charitable Care program.

Between the highly anticipated helicopter ball drop and the skill-based contests at numerous holes throughout Saucon Valley Country Club, it was another year packed with excitement.

We thank everyone in attendance for supporting seniors in need. We can't wait to see everyone on Monday, August 10, 2026, for our 18th Annual Golf Tournament!

For a list of information on tournament sponsors and winners, please visit [phoebe.org/golf](http://phoebe.org/golf).



*Phoebe thanks the 70+ volunteers and Friends of Phoebe for their valuable help on the day of the tournament.*

## Thank You to Our Generous 2025 Golf Tournament Sponsors!

We extend our heartfelt gratitude to **Fitzpatrick Lentz & Bubba, PC** for their incredible support as the Golfer Giveaway Sponsor with a generous \$15,000 sponsorship.

A special thank you also goes to **Johnson Kendall Johnson** and **NewEdge Wealth**, our Awards Dinner Sponsors, for their generous \$10,000 sponsorships.

Your support helps make this a memorable and impactful event for all involved. Thank you for standing with Phoebe in support of our mission!



*Great weather, a great course, and a great time for a great cause at Saucon Valley Country Club.*

# DID YOU KNOW?

## MISSED MEDICATIONS

Missing prescribed medication doses can lead to severe complications for the patient. In some cases, the treated condition may worsen, and new health issues may be introduced.



When a charted medication is unavailable or missed:

### DO

- Check all online, delivery, and storage records for the medication
- Consult your pharmacy for the next available delivery
- Replace medication stock as soon as possible
- Notify your doctor/prescriber and pharmacy of the missed dose
- Document when the dose was missed
- Monitor changes in health

### DON'T

- Double the dose at the time of the next administration
- Assume that missing a dose is okay

**Phoebe Pharmacy's state-of-the-art software system ensures accurate medication tracking from packaging to delivery.**



# Annual Report of Gifts 2024–2025

## *Dear Phoebe Friends,*

Each year, as I reflect on your generosity, I'm reminded that your gifts are far more than financial contributions; they are acts of compassion that help create a home where seniors feel cared for, valued, and supported. Thanks to you, we can provide essential care, meaningful programs, and moments of connection that brighten everyday life.

In this edition of the Phoebe Ministries Annual Report, you'll see the difference you've made firsthand: From Legacy Society gatherings that explore the power of planned giving, to Century Circle socials where residents help shape each event and welcome donors like you into their lives.

You'll also find Phoebe by the Numbers, giving you a snapshot of how your generosity supports specialized care, memory support, spiritual life programs, or simple joys like music, art, and friendship across all campuses.

As we look ahead, I hope you'll feel proud of what you've made possible. Thank you for standing with Phoebe, believing in our mission, and being a part of our extended family. Together, we'll continue to ensure every senior in our care feels the dignity and community they deserve.

With heartfelt gratitude,



*Executive Director of Philanthropy*



*Janet Hines, Executive Director of Philanthropy, enjoys time with the residents at the Century Circle events.*

# Celebrating Generosity

At the heart of giving is generosity—a beautiful expression of selflessness and care. Whether you’ve made your first gift or have supported us for decades, every contribution tells a story of hope, dignity, and love.

Phoebe Ministries proudly celebrates the generosity of our dedicated donors through its annual report of gifts and a series of heartfelt events that honor their commitment to enhancing the lives of older adults. From our Century Circle

Dinner to the lively Century Circle Socials held across our campuses and the annual Donor Appreciation Lunch, these gatherings provide meaningful opportunities for supporters to connect, meet the residents whose lives they touch, and see firsthand the impact of their gifts in action. Each event reflects Phoebe’s deep gratitude for those who make our mission possible through their continued generosity.

*Phoebe President & CEO Scott R. Stevenson and donor Garry Englemann enjoy a wonderful evening at Lehigh Country Club celebrating the donors to Phoebe.*



# Annual Report 2025

## Century Circle & One Percent Club

Each November, Phoebe expresses our sincere appreciation to members of the Century Circle and the One Percent Club at our annual recognition dinner. These individuals make a significant impact by contributing \$1,000 or more within a fiscal year, or—among employees—by donating one percent of their annual salary to Phoebe.

Held at the Lehigh Country Club, the 2024 dinner included updates on how donor generosity has enhanced the quality of life for seniors across our three Continuing Care Retirement Communities (CCRCs).

A highlight of the evening was a personal story shared by Century Circle member and monthly donor, Garry Engelmann, who spoke about the difference Meadow Glen Personal Care at Phoebe Richland made in his mother's life—and in his family's peace of mind.

Century Circle members are also invited to participate in our Century Circle Socials, which offer immersive, campus-specific experiences and the chance to see our enriching community life programs in action. Themes for this year's socials, selected by our residents, included a Kentucky Derby Party at Phoebe Allentown, a Fabulous 50s Summer Kick-Off at Phoebe Richland, and a Pennsylvania Dutch Heritage Day at Phoebe Berks.



*Century Circle Social, Kentucky Derby Party, Phoebe Allentown.*



*Century Circle Social, PA Dutch Heritage Day, Phoebe Berks.*



*Century Circle Social, Fabulous 50s Summer Kick-off, Phoebe Richland.*



*John and Nancy Remaley at the annual donor appreciation lunch at Glasbern Inn.*

## 2025 Donor Appreciation Lunch at the Historic Glasbern Inn

On Wednesday, May 21, Phoebe hosted its annual Donor Appreciation Lunch at the historic Glasbern Inn in Fogelsville to recognize the generous individuals and families who make our work possible.

Among the honorees were 1903 Club members – those who have given to Phoebe for five consecutive years or more; Legacy Society members – individuals who have included Phoebe in their estate plans or contributed through gifts of stock, IRA contributions, or charitable gift annuities (CGAs); Monthly donors; and committee volunteers for the Phoebe Golf Tournament, the Phoebe Institute on Aging (PIA) and the PIA Gala.

At the luncheon, special recognition was given to 1903 Club members who have supported Phoebe Ministries

for 30 years or more, including John and Nancy Remaley and David and June Rung, who were in attendance. We also unveiled our new Legacy Society pin, presented to attendees who have made planned or deferred gifts as part of their lasting commitment to Phoebe.

We are also grateful to our employee donors, whose support goes beyond their daily work. These team members not only care for our residents with dedication and compassion—they also contribute financially, a powerful testament to their belief in Phoebe’s mission. We are proud to recognize these generous and multifaceted contributions. ☸

To learn more about the 1903 Club, Century Circle, One Percent Club, Legacy Society, or to become a monthly donor, please contact the Office of Philanthropy at 610-794-5132 or [philanthropy@phoebe.org](mailto:philanthropy@phoebe.org). Additional giving opportunities can be found at [phoebe.org](http://phoebe.org).

# Phoebe's Impact

Every gift, every hour of service, and every shared moment helps Phoebe Ministries continue our mission of serving with excellence and compassion. In partnership with donors, volunteers, and our dedicated staff, we are building communities where aging is embraced, honored, and enriched. In fiscal year 2024–2025, Phoebe remained a leader in senior care and innovation, providing exceptional services across our three continuing care retirement communities (CCRCs), eight affordable housing communities, in-home care program, continuing care at home through Pathstones, and pharmacy services that support seniors across southeastern Pennsylvania.

## Expanding Access to Healthcare

- **3 Phoebe Pharmacy** locations served 62 healthcare communities and long-term care facilities.
- Short-Term Rehabilitation services supported **1,808 seniors** recovering from illness or injury.
- **145 residents** benefited from specialized Memory Support programs.

## Who We Served

**More than 19,000** older adults across Southeastern Pennsylvania.

(Combined total across all programs: CCRCs, Home Care, Pathstones, and Affordable Housing)

## Breakdown by Service

- **65 seniors** received personalized support through Home Care by Phoebe.
- **125 members** supported at home as they age through Pathstones by Phoebe.
- **443 seniors** lived in safe, affordable homes in our 8 low-income housing communities across Berks, Lehigh, Northampton, and Union counties.

# at a Glance\*

## Faith, Learning, and Enrichment

- **100 seniors** received Spiritual Support from Phoebe's pastoral care team
- **10 students** participated in our Clinical Pastoral Education (CPE) program
- **Average Length of Stay:**
  - Health Care Center (HCC): 99 days
  - Personal Care (PC): 1.9 years
  - Independent Living (IL): 4.4 years
- **7,832 volunteer hours** contributed across all campuses.
- **53,204 hours** of therapeutic services delivered.
- **18,596 hours** of recreational activities offered.
- **123 years** of trusted service to older adults.



## Highlights

- Residents engaged in community gardening at Phoebe Allentown.
- Tovertafel and Rendeвер technology introduced in memory care communities, enriching lives through interactive engagement.
- Therapy pets from Chestnut Ridge at Rodale bring joy to fellow residents.

## Charitable Care— Serving Those in Need

The elderly and the disadvantaged—often overlooked in our society—are at the heart of Phoebe's mission and ministry. With compassion and stewardship, we ensure they receive the dignity and care they deserve. Last year, Phoebe provided \$16.3 million dollars in charitable care to residents in our health care and personal care centers.

\*Numbers as of September 2025.

## FISCAL YEAR 2024–2025 July 1, 2024–June 30, 2025

### PHOEBE-DEVITT HOMES GOVERNING BOARD:

**CHAIRPERSON:** William C. Hacker  
**VICE CHAIRPERSON:** Robert Bertollette  
**TREASURER:** Kenneth R. Charette, Esquire  
**SECRETARY:** The Rev. William Paul Worley  
The Rev. Dr. Bonnie Bates  
Carmen A. Bell  
The Rev. Dr. Carrie Call  
Emmett Lien  
Debora Merrill  
Robert W. Miller  
The Rev. Daniel T. Moser II  
Haniff L. Skeete  
Joshua A. Sloan  
The Rev. Dr. David Charles Smith  
Scott R. Stevenson, President & CEO  
Nick Tranguch

### PHOEBE APARTMENTS BOARD OF TRUSTEES:

**CHAIRPERSON:** William C. Hacker  
**VICE CHAIRPERSON:** Robert Bertollette  
**TREASURER:** Kenneth R. Charette, Esquire  
**SECRETARIES:** The Rev. William Paul Worley  
The Rev. Dr. Bonnie Bates  
**ASSISTANT SECRETARY:** Donna A. Bollinger  
The Rev. Dr. Carrie Call  
Emmett Lien  
The Rev. Daniel T. Moser II  
The Rev. Dr. David Charles Smith  
Scott R. Stevenson, President & CEO

### DEVITT HOUSE BOARD OF TRUSTEES:

**CHAIRPERSON:** The Rev. Douglas Schader  
**VICE CHAIRPERSON:** The Rev. Jeffrey Hauck  
**TREASURER:** Audrey Bingaman  
**SECRETARY:** Mary Schnure  
The Rev. Ricky Phillips  
Larry L. Snook  
Scott R. Stevenson, President & CEO

### PHIL-MONT STRATEGIC ADVISORY COUNCIL:

**CHAIRPERSON:** Joshua A. Sloan  
**GOVERNING BOARD LIAISON:**  
The Rev. William Paul Worley  
Gary Kozick  
Eugene G. Rall Jr.

### AUDIT, FINANCE, & INVESTMENT COMMITTEE:

**CHAIRPERSON:** Kenneth R. Charette, Esquire  
**EX-OFFICIO:** William C. Hacker  
Brian P. Gallagher  
William G. Koch Jr., CPA  
Debora Merrill  
Robert W. Miller  
Patrick Mullen  
Zachary Pierson  
Victoria N. Pritchard  
Donald A. Seibert  
Brendan Speers  
Philip W. Steeley

### CHURCH RELATIONS COMMITTEE:

**CHAIRPERSON:** The Rev. Dr. Carrie Call  
**EX-OFFICIO:** William C. Hacker  
The Rev. Elaine Ely  
Deacon William Hassler  
The Rev. Cliff Herring  
Pastor JoAnne McGee  
The Rev. Daniel T. Moser II  
The Rev. Dwayne A. Mosier  
The Rev. Elmer B. Reinhold Jr.  
Pastor Alex Rodriguez  
The Rev. Dr. David Charles Smith  
Pastor Eugenia Watson  
Scott R. Stevenson, President & CEO

\* Deceased

**EXECUTIVE COMPENSATION COMMITTEE:**

---

CHAIRPERSON: William C. Hacker  
VICE CHAIRPERSON: Robert Bertollette  
TREASURER: Kenneth R. Charette, Esquire  
SECRETARY: The Rev. William Paul Worley  
GOVERNING BOARD MEMBER:  
The Rev. Daniel T. Moser II

**INSTITUTIONAL ADVANCEMENT COMMITTEE:**

---

CHAIRPERSON: Nick Tranguch  
EX-OFFICIO: William C. Hacker  
Carmen A. Bell  
Larry C. Benner  
Dr. Michael A. Conrad  
Sylvia Muller Doyle  
Candy Barr Heimbach, Esquire  
Andrew C. Melzer  
Michelle Mullikin  
Scott R. Stevenson, President & CEO

**NOMINATING & GOVERNANCE COMMITTEE:**

---

CHAIRPERSON: The Rev. William Paul Worley  
EX-OFFICIO & CHAIRPERSON OF GOVERNING BOARD:  
William C. Hacker

VICE CHAIRPERSON OF GOVERNING BOARD:  
Robert Bertollette  
Emmett Lien  
The Rev. Daniel T. Moser II  
Joshua A. Sloan  
Scott R. Stevenson, President & CEO

## PHOEBE-SUPPORTED ORGANIZATIONS AND COMMUNITY EVENTS FY 2024–2025:

ALLENTOWN ART MUSEUM

ARTSQUEST

CATHEDRAL OF ST. CATHARINE OF SIENA

CHARLIE & DON PATT MEMORIAL GOLF  
TOURNAMENT

EMMAUS CHORALE

EMMAUS SUMMER CONCERT SERIES

HOPE AND HEALING JURIED ART SHOW

JEWISH FOOD FESTIVAL

LEHIGH VALLEY AGING IN PLACE

LEHIGH VALLEY PRIDE

LEHIGH VALLEY CONFERENCE OF CHURCHES

LEHIGH VALLEY CHAMBER OF COMMERCE  
EVENTS FOR EMMAUS

LEHIGH VALLEY IRON PIGS

MUHLENBERG THEATRE PROGRAM

READING PHILS

UPPER BUCKS FOODIE FESTIVAL

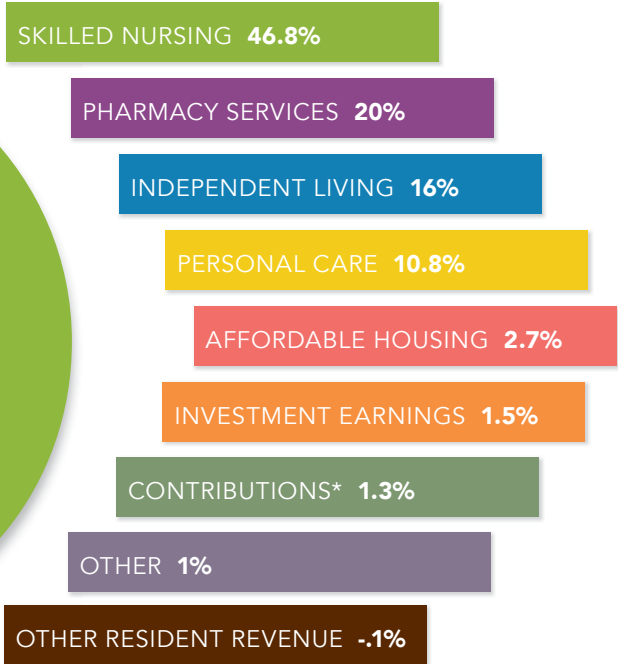
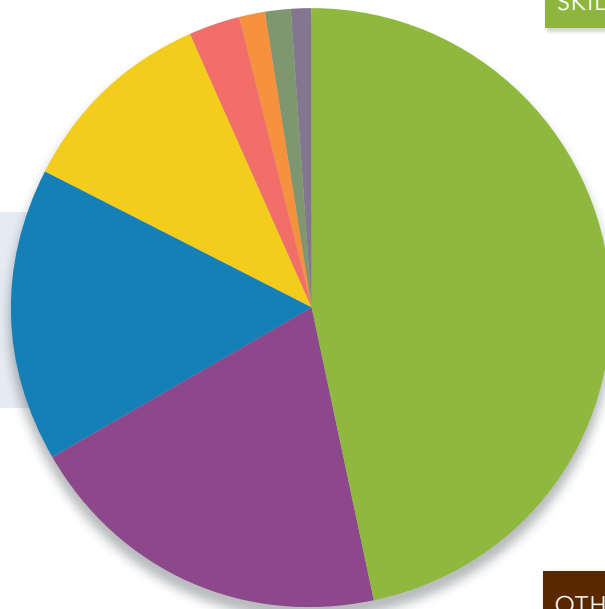
WALK TO END ALZHEIMER'S

# Annual Report 2025 | FINANCIAL SUMMARY

Though we rely on the commitment and support of our partners and volunteers, we would not be able to do the work we do without the generous contributions of our donors. Every year, Phoebe provides benevolent care and housing to individuals who can no longer support themselves. This is the foundation of our mission and our history. With your support, we can continue to ensure a bright and vibrant future for the older adults in our care, both at home and in the community.

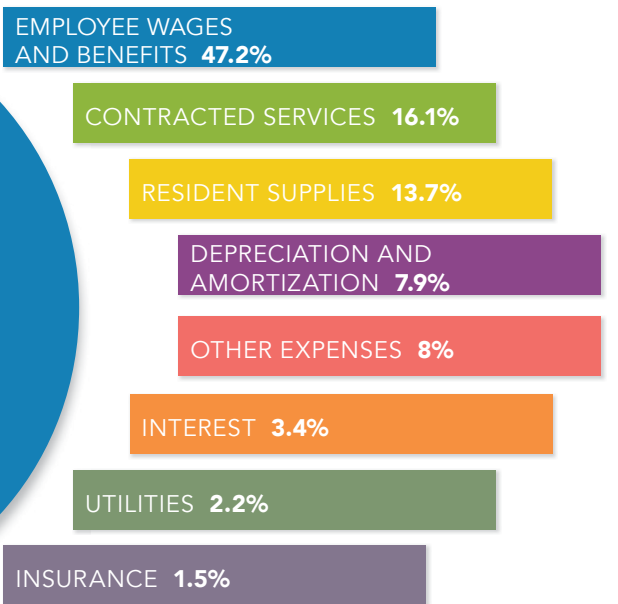
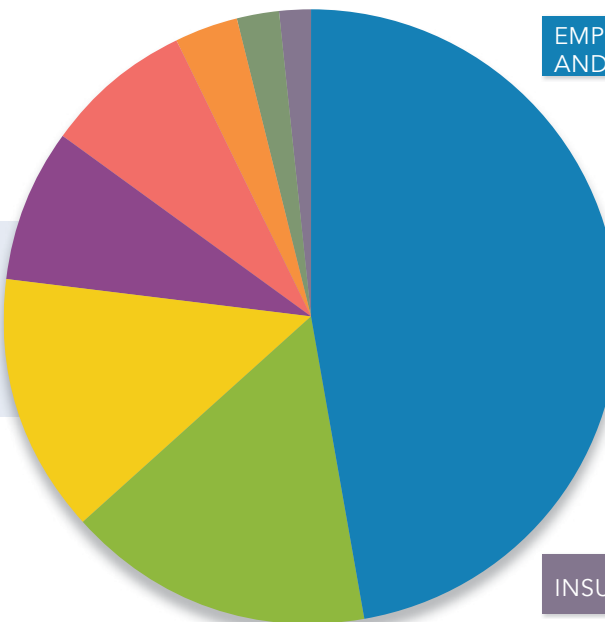
## OPERATING REVENUES

\$149,523,000



## OPERATING EXPENSES

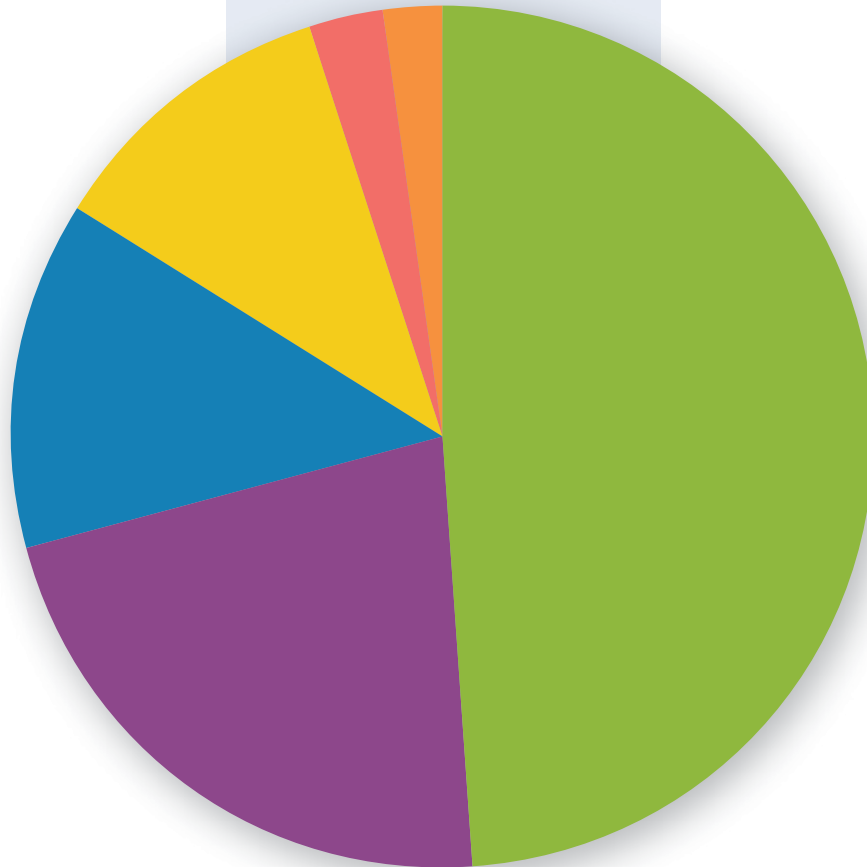
\$160,211,000



\* Accrual-based reporting

**CONTRIBUTIONS  
& TRUST INCOME<sup>†</sup>**

\$1,921,081



**ESTATES**  
\$943,240 **49%**

**INDIVIDUALS**  
\$414,654 **22%**

**BUSINESSES & ORGANIZATIONS**  
\$258,864 **13%**

**TRUSTS**  
\$205,902 **11%**

**CHURCHES**  
\$62,471 **3%**

**FOUNDATIONS**  
\$35,950 **2%**

**THANK YOU FOR YOUR SUPPORT THIS YEAR.**  
We are proud to call you our partners and patrons.

<sup>†</sup>Cash-based reporting

## LEGACY SOCIETY



Phoebe's Legacy Society celebrates people who have included Phoebe in their estate plans or made other planned gift arrangements including charitable gift annuities, charitable remainder trusts, insurance, IRA distributions, or other retirement plans.

Anonymous (9)	Jane R. Breininger*	Mrs. Jenny Faris	Ms. Alyce L. Hastings*
Helen M. Adam*	Mrs. Elisabeth A. Bridgers*	Helen L. Fasold*	Evelyn M. Hawk
Mabel A. Adams*	Mary Bright*	Floyd Faux*	The Rev. Ernest Maynard Hawk*
Edna Adams*	Lottie I. Brobst*	Earl W. Fegely*	Henry E. Heil*
Mr. & Mrs. Carl H. Albright	The Rev. Dr. Scott &	Mr. Earl W. Fegely*	Otto F. Hepner*
Mary C. Alexander*	The Rev. Suzanne Brooks-Cope	Mary Jane Fisher*	Robert E. & Ellamae Hess*
Mr. Carl W. Allio Sr.*	Mrs. Carrie N. Brouse*	Margaret Fisher*	Harvey Hill*
Mrs. Doris L. Almeida*	Harry N. Brown*	Evelyn Fix*	Michael H. & Barbara Hnat*
Herma G. Althouse*	Howard R. Brown*	Virgi Floyd*	Lester A. Hoch*
Letha E. Andrews*	Mrs. Diane Brubaker	Mrs. Marietta M. Fox*	Harold E. Hoch*
The Rev. Dr. &	Clara M. Brunner*	Mr. John A. Frack	Mrs. Helen R. Hodgson*
Mrs. Gene Aulenbach	Mr. & Mrs. Robin R. Bryan	Irene Ruth Frame*	Albert G. Hofammann*
Rev. Evelyn Aurand*	Ruth I. Burgess*	Patricia Frankenfield*	Margaret E. Houser*
Mr. Raymond Babb*	Rachel Burket*	Anne T. Fraunfelder*	Anna H. Houston*
Mrs. Veronica I. Backenstoe	Elizabeth Z. Burkhardt*	John A. Fraunfelder*	Ruth M. Hudock*
Mrs. Grace Bare*	Anna M. Burt*	Ray R. Frederici*	Clara I. Johnson*
Mrs. Mary D. Baum*	Mrs. Marie A. Burtner*	Edith Fretz*	Mr. Robert S.* &
Esther Baush*	Mathilde N. Butz*	Evelyn C. Fretz*	Mrs. Faye L. Johnson
Raymond T. Baver*	Mr. Reno Cappellari*	Mrs. Grace V. Fritz*	Mr. Mardie Juskalian*
Marilyn E. Bear*	Mrs. Reba F. Cartwright*	May E. Fry*	T. Clayton Kantz*
John A. Beard*	Mr. & Mrs. Robert A. Castleton*	Rose C. Funk*	C. Miriam Kates*
Dorothy Bedford*	Mrs. Louise M. Castree*	Walter L. Gackenbach*	Mrs. Pauline L. Katzeman*
Arlington K. Beltz*	Mrs. Elizabeth J. Cattermole	Ruth P. Gale*	Mrs. Doris T. Keehn*
Irma S. Benner*	Elsie M. Christman*	Mrs. Kim L. Galley	Mr. Richard J. Keen Jr.
Walter S. & Margaret M. Berger*	Harry Leroy Christman*	Catherine Irene Gantz*	Mrs. Rachel G. Kerschner*
Raymond K. & Helen I. Berk*	Dr. C. Harold Cohn*	Mr. John M. Gardner &	Nevin L. Kershner*
Clarence K. Bernhard*	Dorothy M. Cooper*	Mrs. Sylvia Betz Gardner	June Kissinger*
Dr. Jozsef M. Berty*	Joseph E. Correll Jr.*	Mr. & Mrs. James R. Garraway Sr.*	Mrs. Evelyn P. Kitzmiller
Ms. Anna Bickhart	Ms. Louise Cox	Mr. & Mrs. James R. Garraway Jr.	Mrs. Jean A. Kline*
Wallace & Sylvia Bieber*	Mary M. Crow*	Mildred A. Garverich*	Esther M. Klock*
Mr. George Biechler	Emma E. Crow*	Mr. & Mrs. Bill Gault	James L. Knappenberger*
Mr. Leon Peters* &	Mr. & Mrs. William J. Davies	Ms. Celeste M. Gaydos	Nelson W. & Effy R. Knauss*
Ms. Barbara Bigelow	Mr. & Mrs. John E. Davis	Arlene M. Gehris*	Ruth K. Koch*
Frances S. Binkley*	Ms. Sandra Davis	Mrs. Dorothy I. Gensler*	Joseph P. Koch*
Lila K. Bittenbender*	Francis R. Deitrich*	Allen M. M. George Sr.*	Mae I. Kocher*
Mr. Kevin Bitz	John E. Delp*	Margeret H. & Glenn F. George*	The Rev. Dr. &
Warren J. Blatt*	Mildred K. Diehl*	Robert Paul Gery*	Mrs. Allan Kramer-Moyer
Mae H. Blöse*	Andrew Dillaway*	Mr. William M. Glose III	Elizabeth A. Krapf*
Mr. & Mrs. Carl H. Bloss*	Mr. Thomas Dilts	Kathleen C. Grammes*	George Marvin Krapf*
Dr. Frederick Blumer	Mr. Arlan P. Dohrenburg	Mrs. Elizabeth K. Green	Richard Kraponick*
The Rev. Dr. Elaine Bogert	Mr. Robert C. Dragotta	Mr. Ralph E. Greenawald*	Evelyn N. Krasley*
Mrs. Mildred Bogert	Ruth Dunkelburger*	John A. Gruber*	Suzanne S. Kratzer*
Mr. & Mrs. Jacob R. Bowers*	Irwin H. Dunkelberger*	Mr. & Mrs. Raymond L. Guidotto	Mae L. Krause*
Lois H. Bowman*	Robert P. Egge*	Mr. William H. Hacker	Francis D. Krout*
Jean I. Bowman*	George & Sue Ehrgood*	Mrs. Madlyn A. Haines*	Miss Anna Kuba*
Iva M. E. Bowman*	Edith Ellison*	Elizabeth Hammers*	Sister Meta Kueck*
Mary P. Bragg*	Florence W. Emery*	Elizabeth Hannah*	Dorothy Kuhfahl*
Robert R. Breinig*	Sarah R. Fackenthal*	John Z. & Anna R. Harner*	Dr. Carl A. Lam & Mrs. Tina Lam
Ms. Joan C. Breinig*	Emma Fair*	Valeria E. Hartman*	Marjorie Landis*

\* Deceased



Mary C. Laubach\*  
 Mr. Henry T. Laubach\*  
 Virginia L. Lear\*  
 Mildred E. Leber\*  
 Willis M. Lebo\*  
 Mrs. Ruth V. LeGath\*  
 Mrs. Betty D. Lehr\*  
 Mrs. Edith Leiby\*  
 Mr. Richard Leiby  
 Mrs. Sandra A. Leidich  
 Mr. Russell Leister  
 Adam S. Lenhart\*  
 Glayds M. Lerch\*  
 Cora A. Levan\*  
 Martha W. Lewis\*  
 Mildred S. Lewis\*  
 Norton L. Lichtenwalner\*  
 Mr. & Mrs. Emmett M. Lien  
 Geraldine F. Lillis\*  
 Mrs. Gladys A. Long\*  
 F. Marguerite Lutz\*  
 Rev. Herman M. Lutz\*  
 Mr. William G. Lutz\*  
 Mr. & Mrs. Jack Lykens  
 Mary L. Machtley\*  
 Earl J. Malsnee\*  
 Betty Jane Manderbach\*  
 Mr. & Mrs. Louis Marinaccio  
 Franklin H. Markley\*  
 Marian E. Markley\*  
 Earl & Arlene Marks\*  
 Sara G. Maurer\*  
 Emily P. Mayers\*  
 Mr. Alan B. McFall &  
 Mrs. Kathleen J. McFall  
 Miss Mary A. McGettigan\*  
 Mrs. A. Isabel Mease\*  
 Edith M. Merkle\*  
 Mrs. Edith Iffland Merkle\*  
 Frederick W. Miller Jr.\*  
 Ernest T. Miller\*  
 Lorraine M. Miller\*  
 Pauline M. Miller\*  
 Mrs. Roberta I. Miner\*  
 Anna E. Mohr\*  
 Benjamin M. Mowery\*  
 Norman H. Moyer\*  
 Thomas B. Musser\*  
 Robert J. Nagle

Mrs. Doris M. Nagle  
 Mrs. Dorine P. Nehf\*  
 Darvin D. Nelson\*  
 Mrs. Annie M. Nolf\*  
 Mr. Clair W. Noll\*  
 Sherwood R. Ohlinger\*  
 Keith H. Orts\*  
 Mrs. Sara Jean Ortt\*  
 Ruth B. Oswald\*  
 Mrs. Lottie F. Pascoe  
 Alma Pasquerello\*  
 Hazel Ellison Pegg\*  
 Mr. & Mrs. Nolan Perin  
 Dr. & Mrs. Raymond A. Phillips  
 Gloria Peter Pool\*  
 Mr. Mitchell &  
 The Rev. Jami Possinger  
 Mr. Lee F. Potteiger\*  
 Mrs. Louise V. Prather\*  
 Kathryn Raber\*  
 The Rev. John\* &  
 Mrs. Myrtle Ragsdale  
 Frances B. Ramsay\*  
 Mrs. Twila Reber\*  
 Jennie M. Reichard\*  
 Kathryn A. Reinert\*  
 Laura A. Reinmiller\*  
 Mr. & Mrs. John J. Remaley  
 Mrs. Margaret Rice  
 Mr. Ronald L. Rider  
 Violetta B. Rinn\*  
 Abigail M. Rissmiller\*  
 Mrs. Bonita Rissmiller  
 Mrs. Charlotte S. Ritter\*  
 William N. Rohrbach\*  
 Mr. Leslie Rohrbach  
 Mr. & Mrs. Joseph L. Ross\*  
 William S. Royer\*  
 Joseph Ruhe\*  
 Mr. & Mrs. David A. Rung  
 Mrs. Carolyn Russell\*  
 M. Madorra Samph\*  
 Mary E. Samson\*  
 Mary H. Sandt\*  
 Shirley L. Sausen\*  
 George W. Schaeffer\*  
 Frances C. Schaeffer\*  
 Eva M. Schappell\*  
 Helen C. Scheirer\*

Mrs. Mildred E. Schlaefer\*  
 Mrs. Virginia O. Schlechte\*  
 Mr. Kermit\* &  
 Mrs. Mildred R. Schleifer  
 Jacob Schnader\*  
 Helen L. Schneider  
 Mr. Leon W. Schock &  
 Ms. Joyce Kline  
 Mr. Charles E. Schofer\*  
 Warren S. Scholl\*  
 Dawn L. Schroth\*  
 Mr. John G. Schwartz\*  
 The Rev. &  
 Mrs. William Seaman  
 Mrs. Frances Seidel\*  
 The Rev. Dr. Kenneth Sell\*  
 Mabel Gruber Senderowitz\*  
 Catharine R. Serfass\*  
 Rosa E. Shafer\*  
 Laura Shearer\*  
 D. Wayne Shelly\*  
 Louise C. Shick\*  
 Frances M. Shiffert\*  
 Eleanor F. Shoemaker\*  
 Miriam Rachel Siegfried\*  
 Mr. & Mrs. Nelson C. Simonson  
 Mrs. Frances Sletvold  
 George A. Smith\*  
 Charles H. C. Snyder\*  
 Forence R. Snyder\*  
 Ruth I. Snyder\*  
 Mr. James E. Spengler  
 Mr. Richard F. Spittler  
 Evelyn M. Stahler\*  
 Bertha Mae Starner\*  
 Jay F. Starner\*  
 J. O. Steeley\*  
 Edward O. Steely\*  
 Rev. Melvin H. Stehr\*  
 Ralph L. Sterner\*  
 William K. Stone\*  
 Martin A. Stoss\*  
 Mrs. Gene S. Stout\*  
 Pearl N. Sutton\*  
 Ethel R. Swoyer\*  
 Mrs. Margaret Y. Teitsworth\*  
 Beatrice M. Thomas\*  
 Alyce W. Tokus\*  
 Sadilla C. Trayer\*

Louise M. Trumbore\*  
 Katie M. Ulrich\*  
 Nellie M. Ulshafer\*  
 Kathleen M. Walp\*  
 George Warmkessel\*  
 Mrs. Irene J. Wasser\*  
 Mrs. Evelyn S. Weaver\*  
 Elizabeth M. Webb\*  
 Joyce W. Wehr\*  
 Mrs. Alberta Mae Weida\*  
 John H. Weisel\*  
 Mr. Ezra A. Wenner Jr.  
 Carolyn E. Werley\*  
 Leota A. Werner\*  
 Trine-Liv Weyman\*  
 Ester M. Whitney\*  
 The Rev. Dr. Richard\* &  
 Mrs. Esther M. Whitney\*  
 Jennie W. Wilson\*  
 Mr. & Mrs. Philip W. Winkler  
 Minerva H. Wolbach\*  
 Mr. Fred W.\* &  
 Mary Jane Wolf\*  
 Edith M. Wolfertz\*  
 John T. Wolfertz\*  
 Harry R. Woodmansee\*  
 Gloria S. Worsley\*  
 Mrs. Mary June Yackera\*  
 The Rev. George H. Yoder\*  
 Otto J. Zach\*  
 Ms. Carol A. Ziegler  
 Ruth E. Zoll\*



\* Deceased

---

# CENTURY CIRCLE

---



The Century Circle recognizes individuals who encourage and sustain our daily work with annual gifts of \$1,000 or more in a fiscal year (July 1 to June 30).

## CENTURY CIRCLE

---

### VISIONARIES (\$25,000+)

---

Mr. David Law & Ms. Lisa Tarreto  
Mr. Ronald L. Rider

---

### LEADERS (\$10,000–\$24,999)

---

Mr. George Biechler  
BSI Corporate Benefits LLC  
Fitzpatrick Lentz & Bubba P.C.  
Mr. & Mrs. Emmett M. Lien  
NewEdge Wealth  
Phoebe Berks Health Care  
Center Auxiliary  
Service Electric Cable TV  
Mrs. Frances Sletvold  
Toshiba Business Solutions  
Trinity UCC (Bethlehem)

---

### FOUNDERS (\$5,000–\$9,999)

---

Anonymous (8)  
Aramark  
Arbor Insurance Group Inc.  
The Rev. Dr. Hilary Barrett &  
Mr. Robert Scarrow  
Barry Isett & Assoc. Inc.  
BLB&B Advisors LLC  
Dr. Frederick Blumer &  
Mrs. Ann\* Blumer  
Burkey Construction Co.  
Campbell, Rappold & Yurasits LLP  
Capital BlueCross  
Ms. Louise Cox  
Cura Hospitality  
Gross McGinley LLP  
Highmark Blue Shield  
HNL Lab Medicine  
The Charles H. Hoch Foundation  
Mr. William C. Hacker

Mr. & Mrs. T. Jerome Holleran  
Lehigh Valley Health Network  
Lindenwold Advisors  
Ms. Carol Matz & Ms. Patricia Ori  
New Castle Lawn & Landscape  
Pennsylvania Southeast Conference  
Prologis  
Mr. & Mrs. John J. Remaley  
RKL LLP  
The Rev. Dr. & Mrs. David Smith  
Mr. & Mrs. Scott R. Stevenson  
Trilogy Construction Management Inc.  
Union UCC (Neffs)  
Warfel Construction Company  
Working Dog Press  
The Wright Family Foundation

---

### BUILDERS (\$2,500–\$4,999)

---

AECOM  
ASR Media  
Baker Tilly US LLP  
Mr. Kevin Bitz  
BLBB Charitable  
Mr. & Mrs. Eric B. Blew  
Boyle Construction Inc.  
Mr. & Mrs. Robin R. Bryan  
CarePatrol of the Lehigh Valley &  
Upper Bucks  
Christ Church UCC (Bethlehem)  
Mr. John F. Collins Jr.  
ConnectCare3/The Benecon Group Inc.  
Ms. Sandra Davis  
Dickie, McCamey & Chilcote  
Mr. Thomas Dilts  
Ms. Martha C. Dodge  
Eastern Time  
emi Landscape  
Feesers Food Distributor  
General HealthCare Resources Inc.  
HCSC/Miller-Keystone Blood Center  
Mr. John\* N. Jacobs &  
Mrs. Barbara J. Jacobs  
Jordan UCC (Allentown)  
Mr. & Mrs. John Taylor Lawton  
Ms. Debora Merrill  
Mr. & Mrs. Robert W. Miller  
Morefield Communications  
The Neffs National Bank  
Penn Community Bank  
Phoebe Berks Peddler's Shop  
Premier Environments Inc.  
QNB Bank  
R.S. Mowery Construction  
Schneider Downs & Company Inc.  
The Scholler Foundation  
Seidel Family Fund of the Berks County  
Community Foundation  
Mr. Brendan Speers

St. John's UCC (Slatington)  
St. Paul's UCC (Fleetwood)  
Mr. Alan Sterner  
Stevens & Lee  
Nick & Monica Tranguch  
Unity Bank  
Dr. & Mrs. Joseph E. Vincent  
The Rev. William Paul Worley  
Mrs. Susan Yatron

---

### MEMBERS (\$1,000–\$2,499)

---

Anonymous (8)  
Niki Alban  
Arbor Insurance Group Community  
Fund of the Lehigh Valley  
Community Foundation  
Baumer Wealth Management  
Mr. Larry C. Benner  
Mr. & Mrs. Robert Bennett  
Mr. Robert G. Bertolotte  
Cetronia Ambulance Corps Inc.  
Citizens  
Connect Foundation  
Mr. & Mrs. John E. Davis  
The Rev. Dr. & Mrs. David DeRemer  
DesignPoint Inc.  
Empirian Health  
Mr. Garry Engelmann  
Gerald & Lori Epler  
First Commonwealth Federal Credit Union  
Mr. David W. Freeman  
Freidens Church of Lenhartsville  
Mr. Brian P. Gallagher  
Mrs. Ruth Goos  
Mr. & Mrs. Brian P. Gregory  
HJ Sims  
Peter & Jayne Hontz  
IntelyCare  
J. M. Ball Construction Inc.  
Mr. & Mrs. Bruce R. Jones  
K & H Custom Window Treatments  
Judith & Jeffrey Kehr  
Mr. Richard J. Keen Jr.  
The Rev. Dr. & Mrs. Allan Kramer-Moyer  
Dr. Carl A. Lam & Mrs. Tina Lam  
Latsha Davis & Marshall P.C.  
Mr. & Mrs. Robert F. Lee  
Mr. G. Arden\* Link &  
Mrs. Dorothy G. Link  
Mr. & Mrs. Jack Lykens  
Ms. Lorna Malawi  
Ms. Candace Mason  
The Rev. & Mrs. Bill Metzger  
Mrs. Alberta Miller  
Mr. Mark A. Moran  
Parkside Ventures LP

\* Deceased

PenTeleData

Dr. & Mrs. Raymond A. Phillips  
Robert and Mary Ann Pickell  
Pleasantville UCC (Chalfont)

Mrs. Myrtle Ragsdale

Mrs. Linda L. Rentschler

Mrs. Margaret Rice

Mr. & Mrs. Robert Richards

Mrs. Bonita Rissmiller

Mr. & Mrs. David A. Rung

Ms. Agnes O. Scherer

Mr. & Mrs. Michael B. Schmauder

Mary Jo Serfass

Mr. & Mrs. Jason Shott

Ms. Mary E. Sine

Mr. & Mrs. Joshua A. Sloan

Ms. Marian Stewart\*

Thrivent Charitable Impact & Investing  
Trago Mechanical Inc.

Vanderwalt Construction

Mr. Jeffrey Wagner

Mr. & Mrs. James Walker

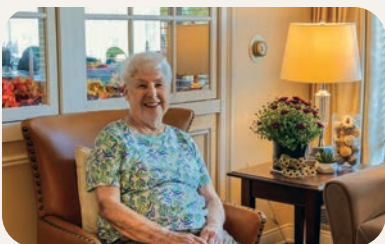
Mrs. Donna M. Wanamaker

Watkins Architect LTD

Mrs. Annette C. Winterhalt

Mr. Donald H. Wotring Jr.

Ms. Carol A. Ziegler



# 1903 CLUB

## 1903 CLUB

### 30+ YEARS

- Anonymous (1)
- Mr. & Mrs. Richard H. Bohner
- Mrs. Sandra F. Bond
- Mr. Richard H. Brumbach
- Ms. Lynda Lee Chasar
- Mr. Milton E. Gockley Jr.
- Mr. Franklin L. Homme
- Dr. Janet Senderowitz Loengard
- Mrs. Diana W. Patt
- Mr. & Mrs. John J. Remaley
- Mr. Ronald L. Rider
- Mr. & Mrs. David A. Rung
- Mr. & Mrs. Harold W. Thomas
- Ms. Susan L. Wentink
- Miss Deborah L. Yarborough

### 20+ YEARS

- Anonymous (4)
- Mr. David A. Ackerman
- Mr. & Mrs. Carl H. Albright
- Mr. Larry C. Benner
- Ms. Sharon A. Bogh
- Mr. Timothy & Mrs. Donna Bollinger
- Mr. & Mrs. Robin R. Bryan
- Mr. John F. Collins Jr.
- Mr. & Mrs. John E. Davis
- The Rev. Dr. & Mrs. David DeRemer
- Mrs. Lois Dilliard
- Ms. Martha C. Dodge
- Mr. & Mrs. Brian P. Gregory
- Mr. & Mrs. Stanley C. Harwick
- Mr. David D. Hoffman
- Mrs. Faye L. Johnson
- Mr. & Mrs. Harry A. Kauffman
- Mr. & Mrs. Douglas N. Kern
- Mr. & Mrs. Rob & Kathy Khanuja
- Mr. Kent S. Kisenbauer
- Mr. & Mrs. David P. Ludwig
- Mr. & Mrs. William C. Matten
- Miss Barbara E. Miller
- Miss Jean A. Miller
- Mr. & Mrs. Robert W. Miller
- Mrs. Alberta Miller
- Ms. Joan Miller Moran
- The Rev. & Mrs. Daniel Moser

Phoebe's 1903 Club identifies individuals who have consecutively supported Phoebe Ministries for five years or longer. Since the founding of the 1903 Club, 1,344 members have made 25,693 gifts totaling more than \$6.2 million.

- The Rev. Dr. & Mrs. Paul Peters
- Dr. & Mrs. Raymond A. Phillips
- Mrs. Julie V. Pokorny-Conklin
- Mr. & Mrs. Ronald G. Schwartz
- The Rev. & Mrs. William Seaman
- Mr. & Mrs. Donald A. Seibert
- The Rev. Dorothy Shelly
- Mr. David Pier & Mrs. Michell Staska-Pier
- Dr. & Mrs. Joseph E. Vincent
- Mrs. Suzanne Wright Rydzewski
- Mr. & Mrs. Darwin B. Zellner

### 10+ YEARS

- Anonymous (9)
- Mr. & Mrs. John A. Althouse
- The Rev. Dr. Hilary Barrett & Mr. Robert Scarrow
- Mr. Robert G. Bertoletto
- Mr. John J. Blazosky & Ms. Deborah Lange
- Mr. & Mrs. Daniel Bendel
- Dr. Frederick Blumer & Mrs. Ann\* Blumer
- The Rev. Dr. Scott & The Rev. Suzanne Brooks-Cope
- Sue Ann Geiger
- Mr. William M. Glose III
- Mrs. Barbara Goga
- Mr. & Mrs. Raymond L. Guidotto
- Mr. William C. Hacker
- Mrs. Barbara J. Jacobs & Mr. John\* N. Jacobs
- Mr. & Mrs. Roy W. Johnson
- Ms. Emilie Joly
- Mr. & Mrs. Bruce R. Jones
- Ms. Barbara Kautzman
- Ms. Elizabeth Anne Keat
- Mr. Richard J. Keen Jr.
- Mr. Dennis D. Kieffer
- Mr. James D. King
- Mrs. Nancy Knoblauch
- Mr. & Mrs. LaMar Kratz
- Dr. Carl A. Lam & Mrs. Tina Lam
- Mr. & Mrs. John Taylor Lawton
- Mr. G. Arden\* Link & Mrs. Dorothy G. Link
- Mr. & Mrs. John J. Lupco Jr.

\* Deceased

Ms. Candace Mason  
 Mr. & Mrs. Harry G. McCafferty  
 The Rev. & Mrs. Bill Metzger  
 Ms. Pamela Moore  
 Mr. & Mrs. Roger Moyer  
 Mrs. Sarah N. Moyer  
 Mr. Donald G. Musselman  
 Mr. David P. Nehf  
 Mr. & Mrs. Ted Nickel  
 Peter & Doris Oswald  
 Mr. Ralph Pezoldt  
 Ms. Linda J. Plunkett  
 Mrs. Patrice M. Reiche  
 Mrs. Margaret Rice  
 Ms. Suzanne Romig  
 Mr. & Mrs. Robert L. Schaffer  
 Ms. Agnes O. Scherer  
 Mr. & Mrs. Michael B. Schmauder  
 Ms. Barbara Scott  
 Donna Sell  
 Miss Marilyn Simmons  
 Ms. Mary E. Sine  
 Mr. & Mrs. Joshua A. Sloan  
 Ms. Wilma S. Slyoff  
 Mr. & Mrs. James R. Smith  
 Mr. & Mrs. Willard A. Snyder  
 Mr. & Mrs. Scott R. Stevenson  
 Mr. & Mrs. John G. Thomas III  
 Mr. Peter Van Name  
 Mr. & Mrs. John M. Vanyur  
 Mr. David Wolf  
 Mrs. Donna M. & Mr. John Wright  
 Ms. Dolores Yundt  
 Ms. Carol A. Ziegler

## 5+ YEARS

Anonymous (15)  
 Mr. Frank Armetta  
 Mr. & Mrs. Thomas Baer  
 Mr. David Baker  
 Ms. Theresa Baranek  
 Ms. Deborah Bargione  
 Ms. Betsy Barket  
 Ms. Jamianne Barlow  
 Mr. Steven Bartosik  
 The Rev. Dr. Bonita Bates  
 Mr. & Mrs. Robert Bennett  
 Ms. Anna Bickhart  
 Mr. George Biechler  
 Mr. Kevin Bitz  
 Ms. Brianna Black  
 Ms. Patricia Bobal  
 Ms. Jill D. Brewster  
 The Rev. Dr.Carolyn Call  
 Mr. Kenneth R. Charette, Esq.  
 Mr. & Mrs. Joseph Clark  
 Mr. Richard D. Collemacine

Ms. Cynthia Dal Farra  
 Mr. & Mrs. Ray Daniels  
 Ms. Sandra Davis  
 Mr. & Mrs. Terry DeBold  
 Mr. & Mrs. Robert DePorter  
 Ms. Lindsay Dierolf  
 Ms. Linda A. Dreisbach Ferrol  
 The Rev. Elaine Ely  
 Mr. Garry Engelmann  
 Ms. Sara Estrada  
 Mrs. Dawn Fernandez  
 Ms. Victoria Fisher  
 Ms. Kaye Fox  
 Ms. Devon L. Frey  
 Mr. Brian P. Gallagher  
 Mr. & Mrs. Mark Gamble  
 Mr. Michael Garcia  
 Ms. Donna Gerhart  
 Mrs. Miriam Gower  
 Mrs. Carol E. Grandstaff  
 Mr. Todd Greb  
 Mr. & Mrs. John H. Grimes  
 Ms. Jennifer Gumina  
 Mr. & Mrs. Chris Heffelfinger  
 Ms. Maryanne Heffelfinger  
 Ms. Michele E. Heist  
 Mr. Earl W. Herman  
 Ms. Sandra Herman  
 The Rev. Cliff Herring  
 Mr. David Hoffman  
 Ms. Karena Hostetter  
 Miss Barbara Hughes  
 Mr. & Mrs. Gene Hull Jr.  
 Ms. Joan Keller  
 Mr. & Mrs. Daniel Kerns  
 Ms. Vicki Kocis  
 Ms. Gina Kolb  
 Ms. Irene Kolessar  
 Ms. Tara Kralik  
 Ms. Natalie Kriner  
 Ms. Brandy Kubiniec  
 Mr. & Mrs. Rodney Kulp  
 Mrs. Debbie Kunkle  
 Mr. David Law &  
 Ms. Lisa Tarreto  
 Mrs. Marilyn K. Layser  
 Mr. & Mrs. Robert F. Lee  
 Mr. & Mrs. Emmett M. Lien  
 Ms. Lorna Malawi  
 Mr. & Mrs. Robert  
 McClennan  
 Mr. & Mrs. John R. Mehler  
 Ms. Debora Merrill  
 Ms. Kimberly Metz & Mr.  
 Ash Abouzari  
 Ms. Lois Mohr &  
 Mr. Tom Arner  
 Ms. Ann Dee Morris  
 Mr. Darren Morris

Mr. & Mrs. Jason Najarian  
 Ms. Michelle O'Connor  
 Mr. & Mrs. William Pammer  
 Mr. & Mrs. Douglas C. Patt  
 Ms. Kristine A. Paupini  
 Ms. AnnMarie  
 Petitto-Thomas &  
 Mr. Joseph Thomas  
 Mr. Randy Prutsman  
 Mr. Hans Radelow  
 Mrs. Myrtle Ragsdale  
 The Rev. &  
 Mrs. Elmer Reinhold  
 Ms. Merlyn Reinoehl  
 Mrs. Linda L. Rentschler  
 Ms. Constance A. Reynolds  
 Mr. & Mrs. Robert Richards  
 Mrs. Bonita Rissmiller  
 Ms. Joan Saffron  
 Ms. Louise Santee  
 The Rev. Dana Schlegel  
 Ms. Dianne Schmoyer  
 Mr. Stephen Schulz  
 Mr. Manfred P. Schurer  
 Ms. Beth Sell  
 Ms. Ruthann Sell  
 Ms. Margaret Seltzer  
 Ms. Jolene Seng  
 Ms. Shelley Shimer  
 Cynthia Siegfried  
 Mrs. Yvonne Slapinsky  
 The Rev. Dr. &  
 Mrs. David Smith  
 Ms. Kristi Smith  
 Ms. Linda J. Smith  
 Ms. Sue Smith  
 Ms. Tracey Smith  
 Ms. Janice Solomon  
 Ms. Maureen Spagna  
 Mr. & Mrs. Thomas G. Stauffer  
 Mr. Barry &  
 The Rev. Rebecca Stephens  
 Mrs. Mary O. Stevenson  
 Mr. Ronald Stocker  
 Mr. & Mrs. James A. Stoneback  
 Ms. Linnea E. Swoyer  
 Nick & Monica Tranguch  
 Ms. Shannon Trinkle  
 Ms. Miriel Urena  
 Ms. Michelle Virella  
 Mr. Jeffrey Wagner  
 Ms. Trish Wells  
 Mrs. Annette C. Winterhalt  
 Mr. & Mrs. Richard Wolfe  
 The Rev. William Paul Worley  
 Mr. & Mrs. David W.  
 Zimmerman

## ESTATES

Letha E. Andrews  
 Mr. & Mrs. Robert A.  
 Castleton  
 Evelyn M. Hawk  
 Glayds M. Lerch  
 Earl & Arlene Marks  
 Robert J. Nagle  
 Mildred R. Schleifer  
 Helen L. Schneider

## TRUSTS

Mabel A. Adams  
 John A. Beard  
 Raymond K. & Helen I. Berk  
 Lottie I. Brobst  
 George & Sue Ehrgood  
 John Z. & Anna R. Harner  
 T. Clayton Kantz  
 Mary C. Laubach  
 Adam S. Lenhart  
 Norton L. Lichtenwalner  
 Franklin H. Markley  
 Lorraine M. Miller  
 Norman H. Moyer  
 Thomas B. Musser  
 Mary E. Samson  
 George W. Schaeffer  
 Jacob Schnader  
 Warren S. Scholl  
 Edward O. Steely  
 Katie M. Ulrich  
 Nellie M. Ulshafer  
 Harry R. Woodmansee  
 Ruth E. Zoll



\* Deceased

## INDIVIDUAL DONORS

### SUSTAINERS (\$500–\$999)

---

Anonymous (8)  
Mr. David A. Ackerman  
Mr. & Mrs. Thomas Baer  
Mr. John M. Gardner &  
Mrs. Sylvia Betz Gardner  
Mr. Greg Bobka  
Andrew & Linda Boyer  
Ms. Stephanie Capaccio  
Annmarie Chavarria  
Mr. Piero Corrado  
Ms. Fern Culhane  
Mr. Michael Drago  
Mr. Dennis Eisenhart  
Lisa Elvin  
Ms. Victoria Fisher  
Ms. Kaye Fox  
Mr. Robert Gaffney Sr.  
Mr. William M. Glose III  
Michelle Graham  
Mr. Andrew Grose  
Mr. Tony Guerrieri  
Mr. Gerald R. Haas & Mrs. Elaine\* P. Haas  
Ms. Michele E. Heist  
Lorna Hunter  
Mr. Kent S. Huntzinger  
Michael & Barbara Johnston  
Mr. & Mrs. Douglas N. Kern  
Mr. & Mrs. Rob & Kathy Khanuja  
Mr. Dennis D. Kieffer  
Mr. James D. King  
Mrs. Ruby Kistler\*  
Dr. & Mrs. Shane D. Lawrence  
Ms. Kimberly Metz & Mr. Ash Abouzari  
Ms. Joan Miller Moran  
Ms. Nancy Ocorr  
Mrs. Diana W. Patt  
Mrs. Julie V. Pokorny-Conklin  
Mr. David Quickel  
Mrs. Patrice M. Reiche  
Mr. Christopher Reimels  
Ms. Louise Santee  
Ms. Donna Schudel & Mr. John Barone  
Mr. & Mrs. Donald A. Seibert  
Ms. Althea Sell\*  
Mr. Haniff L. Skeete  
Mr. & Mrs. Glen Smith  
Cherie & Michael Starner  
Mr. David Pier & Mrs. Michell Staska-Pier  
Ms. Mallory Sweeney  
Donna Tatro

### DEACONESSES (\$100–\$499)

---

Anonymous (28)  
Mr. & Mrs. Carl H. Albright

Mr. & Mrs. John A. Althouse  
Samantha Andujar  
Dr. George & Mrs. Judith Arangio  
Samantha Arodes  
The Rev. Dr. & Mrs. Gene Aulenbach  
Ms. Joanne Baker  
Lina Barbieri  
Ms. Deborah Bargione  
Mr. Paul Barr  
Mr. Steven Bartosik  
The Rev. Dr. Bonita Bates  
Mr. Justin Beidleman  
Linda Bell  
Ms. Carmen Bell  
Mr. Daniel Bendel  
Ms. Louise Bennage  
Ms. Sandra Beyer  
Ms. Anna Bickhart  
The Rev. Virginia Biniek  
Ms. Katherine Black  
Mr. John J. Blazosky & Ms. Deborah Lange  
Ms. Julie Blundetto  
Beverly Boger  
Ms. Sharon A. Bogh  
Mr. & Mrs. Richard H. Bohner  
Mr. Timothy & Mrs. Donna Bollinger  
Mr. & Mrs. Glenn Bonney  
Mr. & Mrs. Gregory Boyer  
Ms. Liza Brandon  
The Rev. Dr. Scott &  
The Rev. Suzanne Brooks-Cope  
Ms. Fern Brown  
Lee Bruder  
Mr. Richard H. Brumbach  
Janet Bryant-Mcilhenny  
Margaret Buchanan/Ohlsson  
Ms. Erin Burke  
Mr. Eric Burke  
Mr. Curt Bush  
The Rev. Dr. Carolyne Call  
Mr. & Mrs. Kevin Campbell  
Mr. Phil Carpenter  
Kevin Carter  
Mr. José Casalina  
Mrs. Phyllis Caskie  
Mr. Peter Castagna  
Ms. Patricia\* Charles  
Therese P. Chasse  
Mr. James Coker & Family  
Lauren Coker  
Mr. Richard D. Collemacine  
Arielle Colon  
Mr. Robert N. Cort  
Mr. & Mrs. Daniel R. Cressman  
Mary Daane & Michael Cirasella  
Ms. Cynthia Dal Farra  
Erin Dallago  
Justine de la Fuente

Ms. Karen Dearborn  
Mr. & Mrs. Terry DeBolt  
Mr. & Mrs. John Delfini  
Anna Demetrius  
Devitt House, Board of Directors  
Monica Dieterly  
Mrs. Lois Dilliard  
Mr. Frank Dreher  
Mr. Stanley Drust  
Mr. & Mrs. Martin Duccilli  
Dr. Nanette Dudley  
Mr. Robert E. Dudley  
East Penn Traction Club  
Arden & Bonnie Ebling  
Argyro & James Elliker  
The Rev. Elaine Ely  
Mrs. Lynann Everett  
Mr. Todd Fairfield  
Vicki Farley  
Steven Farr  
Ms. Mary Fey  
Mr. Robert J. Fink Jr.  
Mr. & Mrs. Steven Finkel  
Mrs. Joan Flynn  
Michelle Folk  
Charles Forsythe  
Ms. Lisa Frantz  
Carol Frawley  
Mr. Matthew French  
Ms. Devon L. Frey  
Mr. William Fustos  
Mr. & Mrs. Mark Gamble  
Mr. & Mrs. David J. Gardner  
Mr. & Mrs. Bill Gault  
Sue Ann Geiger  
Dr. Larry J. Geller  
Mrs. Ruth Gerhart  
Mr. & Mrs. Kevin J. Gertz  
Cynthia Gillis  
Mr. Milton E. Gockley Jr.  
Mr. Ken Godvolt  
Mrs. Barbara Goga  
Elinore Gold  
Courtney Graham  
Mrs. Carol E. Grandstaff  
Mr. & Mrs. James F. Gregory  
David & Pauline Greulich  
Mr. & Mrs. John H. Grimes  
Amy Grodsky  
Julie Groeninger  
Mr. Curtis Groller  
Jackeline Guadalupe  
Mr. & Mrs. Raymond L. Guidotto  
Teri Haddad  
Mr. & Mrs. Lawrence A. Hall  
Mr. James Hankle  
Mr. Dean K. Harris  
Mr. & Mrs. Stanley C. Harwick

\* Deceased

Scott & Gail Hauseman  
 Mr. & Mrs. Chris Heffelfinger  
 Ms. Maryanne Heffelfinger  
 Mrs. Linda Held & Mr. Mark Held  
 Dennis & Virginia Heller  
 Mr. Earl W. Herman  
 Ms. Sandra Herman  
 The Rev. Cliff Herring  
 Larry & Tina Hieb  
 Norman Hillegass & Nancy\* Hillegass  
 Janet Hines  
 Mr. David D. Hoffman  
 Wendy-Jo Honzo-Vassa  
 Dolores Horrigan  
 Shalyn Houser  
 Mr. Edward Ingram  
 Cindy Inserra  
 Belinda Janiszewski  
 Sandy Jenkins & Terry Jenkins  
 Mrs. Faye L. Johnson  
 Mr. & Mrs. Roy W. Johnson  
 Annie Junge  
 Mr. John Kalman  
 Marsha Karess  
 Mr. & Mrs. Harry A. Kauffman  
 Ms. Barbara Kautzman  
 Bill & Carol Keane  
 Ms. Elizabeth Anne Keat  
 Mr. & Mrs. David C. Keehn  
 Ms. Joan Keller  
 The Rev. Jeffrey Kistler &  
 Dr. Barbara Kistler  
 Lisa Kline  
 Martin & Cynthia Kline  
 Linda Knabb  
 Mr. Jeffrey Koch  
 Mr. Dustin Kollar  
 Mr. Bruce Kraft  
 Ms. Tara Kralik  
 Mr. & Mrs. Robert J. Krause  
 Georgia Kremus  
 Mr. Ronald Krikorian & Ms. Alice Parr  
 Ms. Natalie Kriner  
 Ms. Brandy Kubiniec  
 Mr. Philip Kulp  
 Mrs. Carol J. Lehman  
 Betty Libensperger  
 Mr. Michael Lieberman  
 Rose Lippy  
 Ms. Patricia Lockhart  
 Dr. Janet Senderowitz Loengard  
 John & Lisa Lokuta  
 KatieRae Long  
 Jessica Losa  
 Mr. & Mrs. Thomas Loyle  
 Mr. & Mrs. David P. Ludwig  
 Mr. & Mrs. William Machose  
 Mr. Joseph F. Maggio

Mrs. Diane L. Makos-Batemarco &  
 Mr. Robert Batemarco  
 Dianne Manges  
 Kimberly Maniscalco  
 Ms. Ruth Marcon  
 Mr. Ken Marino  
 Mr. & Mrs. John V. Martorelli  
 Mr. & Mrs. William C. Matten  
 Carl Matuszek & Kathleen Matuszek  
 Susan McClain  
 Mr. Les McCoy  
 Valerie McCoy  
 Ms. Linda McCrea  
 Mr. & Mrs. John R. Mehler  
 The Meredith Family Foundation  
 Maria S. Michener & Michael W. Michener  
 Miss Barbara E. Miller  
 Miss Jean A. Miller  
 Mr. & Mrs. Richard H. Miller  
 Mr. & Mrs. Scott L. Miller  
 John & Sandra Milligan  
 Ms. Lois Mohr & Mr. Tom Arner  
 Mr. Michael Molta  
 Ms. Pamela Moore  
 Gina Moore-Werley  
 The Rev. & Mrs. Daniel Moser  
 The Rev. & Mrs. Howard Mumma  
 Mrs. Judith Murray  
 Mr. Donald G. Musselman  
 Isis Nagy  
 Elizabeth Naidoo  
 Patti Nappi  
 Mr. David P. Nehf  
 The Rev. Dr. Christine Nelson  
 Kathleen Nolan  
 Mr. Paul Novogoratz &  
 Mrs. Bobbi-Jo Novogoratz  
 Jenelle Olsovsky  
 Mr. Steve Ondrusek  
 Ms. Debra Ortiz  
 Dawn Oswald  
 Peter & Doris Oswald  
 Ms. Samantha Owuor  
 Ms. Sarah Panovec  
 Mr. & Mrs. Douglas C. Patt  
 Ms. Kristine A. Paupini  
 Mr. Zach Peirson  
 Mr. Daniel Peters  
 The Rev. Dr. & Mrs. Paul Peters  
 Nicole Petrokehagias  
 Mr. Ralph Pezoldt  
 Ms. Georgette Pieper  
 Ms. Elizabeth J. Pinto  
 Ruth Powers  
 Christophere & Robin Pruitt  
 Mr. & Mrs. Michael T. Radio  
 Mr. Bill Reed  
 Stacy Reehl

The Rev. & Mrs. Elmer Reinhold  
 Ms. Constance A. Reynolds  
 Linda J. Richards  
 Michelle Ritter  
 Ms. Carol Roach  
 Mr. Francis X. Robb Jr.  
 Mr. Leslie Rohrbach  
 Meghan Rose  
 Betsy Rothrock  
 Mr. & Mrs. Michael L. Sachenik  
 Mr. Victor Salicetti  
 Joyce & Tony Santay  
 Mr. Daniel Sautter  
 Deborah & Lester Schaeffer  
 Kimberly Scheetz  
 The Rev. Dana Schlegel  
 James Schneck & Janice Eickmeier  
 Mr. Fred Schuler  
 Vivian Schulter  
 Ms. Barbara Scott  
 The Rev. & Mrs. William Seaman  
 Kathleen Shaps  
 Mr. & Mrs. Michael J. Sharkey  
 The Rev. Dorothy Shelly  
 Mrs. Ruth Shisler  
 Margaret M. Sieger  
 Cynthia Siegfried  
 Miss Marilyn Simmons  
 Mike Sinclair  
 Ms. Wilma S. Slyoff  
 Mr. Cody S. Smith  
 Ms. Kristi Smith  
 Mr. & Mrs. James R. Smith  
 Ms. Tracey Smith  
 Mr. Kenneth Smott  
 Andrew Snyder  
 Janice Snyder  
 Mr. John Sottosanti  
 Dr. Kate Spillane  
 Mr. & Mrs. Thomas G. Stauffer  
 Ms. Dawn Steigerwalt  
 Mr. Barry & The Rev. Rebecca Stephens  
 Ms. Jill W. Stevens & Mr. Howard Stevens  
 Mr. Gary Stitzel  
 Mr. Ronald Stocker  
 Mr. & Mrs. James A. Stoneback  
 William J. & El Sugra  
 Jane Swan  
 The AC/DSU Theatre Class of 1999  
 Mr. & Mrs. Harold W. Thomas  
 Mr. & Mrs. John G. Thomas III  
 Ms. Marilyn Tinor  
 Dominic Trabosci  
 Mr. Thomas Trabosci  
 Ms. Shannon Trinkle  
 Phil Troxell  
 Troy and Leavy Families  
 Ms. Cindy Turner

\* Deceased

Jessica Van Horn  
 Mr. & Mrs. John M. Vanyur  
 Sharon Wagner  
 Courtney Waring  
 A. Bruce & Gretchen Weikel  
 Mrs. Nancy Weikert & Mr. John Tibbetts  
 McKenzie West  
 Mary Whiteman  
 Mrs. Joan Wickel  
 The Rev. Dr. R. Jane Williams  
 Allison Wilson  
 Linda Lapos & Paul Wirth  
 Ms. Ann Wlazelek  
 Mr. Mark Wlotko  
 Mr. Arthur Worman  
 Mrs. Suzanne Wright Rydzewski  
 Miss Deborah L. Yarborough  
 Mr. Tim Yenawine  
 Ms. Barbara Yost  
 Crystal Young  
 Sharon Zazzara  
 Mr. & Mrs. David W. Zimmerman

## BUSINESSES, FOUNDATIONS, & ORGANIZATIONS

Anonymous (38)  
 Act 1 DeSales University Theatre  
 AECOM  
 AKCG - Public Relations Counselors  
 Allentown Art Museum of the Lehigh Valley  
 Allentown Family Foot Care  
 Allentown Farmers Market  
 Allied Resources Medical Staffing  
 AmericaVen  
 Applebee's Neighborhood Grill  
 Aramark  
 Arbor Insurance Group Community Fund of  
 the Lehigh Valley Community Foundation  
 Arbor Insurance Group Inc.  
 ArtsQuest  
 ASR Media  
 Baker Tilly US LLP  
 Baristi Coffee Roasters  
 BarkBox  
 Barry Isett & Assoc. Inc.  
 Baumer Wealth Management  
 Bellezza Salon & Spa  
 Bethlehem Business Forms LLC  
 BLB&B Advisors LLC  
 BLBB Charitable  
 Blue Ridge Pressure Casting  
 Boyle Construction Inc.  
 BruDaddy's Brewing Co.  
 BSI Corporate Benefits LLC  
 Buckeye Partners  
 Burkey Construction Co.  
 Butter Valley Golf Port  
 C.F. Martin & Co. Inc.  
 Camelback Ski Coporation  
 Campbell, Rappold & Yurasits LLP

Capital BlueCross  
 Cappellini Law  
 CarePatrol of the Lehigh Valley &  
 Upper Bucks  
 CB Specialty Roofs  
 CE Contracting  
 Central Grange #1650  
 Cetronia Ambulance Corps Inc.  
 Citizens  
 Civic Theatre of Allentown  
 ConnectCare3 / The Benecon Group Inc.  
 Connect Foundation  
 Copperhead Grill  
 Cornerstone Advisors Asset Management  
 Costco  
 Crayola  
 Crystal Signatures  
 Cura Hospitality  
 Da Vinci Science Center  
 Danowsky-Reeds Memorial Fund  
 Delaware & Lehigh Valley Canal Museum  
 DesignPoint Inc.  
 Dickie, McCamey & Chilcote  
 Dorney Park & Wildwater Kingdom  
 Duke's Delights  
 Dun & Bradstreet  
 Eastern State Penitentiary  
 Eastern Time  
 Egypt Star Bakery  
 Elk Mountain Ski Resort  
 Emediaworks  
 emi Landscape  
 Empirian Health  
 Fairground Hotel Seafood House  
 Feesers Food Distributor  
 Fehling Campbell Family Foundation  
 First Commonwealth Federal Credit Union  
 Fitzpatrick Lentz & Bubba P.C.  
 Gannon's Gourmet Kitchens & Gift Baskets  
 General HealthCare Resources Inc.  
 Green Pond Country Club  
 Gross McGinley LLP  
 Hands On House  
 Hawk Mountain Sanctuary Association  
 Hershey Gardens  
 Highmark Blue Shield  
 HJ Sims  
 HNL Lab Medicine  
 The Charles H. Hoch Foundation  
 HCSC/Miller-Keystone Blood Center  
 IntelyCare  
 J. M. Ball Construction Inc.  
 Java Joint  
 Josh Early Candies  
 Just Waxed Mobile Detailing  
 K & H Custom Window Treatments  
 Keystone Pub and Grill  
 King Kone  
 Kobrovsky Family Fund  
 Kuhnsville Car Wash  
 Latsha Davis & Marshall P.C.  
 Leader Of The Pack

Lehigh Valley Health Network  
 Lehigh Valley Home Care/  
 Lehigh Valley Hospice  
 Lehigh Valley Phantoms  
 Lehigh Valley Sporting Clays  
 Liberty Painting  
 Lindenwold Advisors  
 Link Beverages  
 Longwood Gardens  
 Lost River Caverns  
 Lucky Strokes Golf  
 Marblehead Chowder House  
 McKonly & Asbury  
 Miller Supply  
 Miller Symphony Hall  
 Mission BBQ  
 Morefield Communications  
 Morgans  
 Mr. Bill's Poultry Market  
 Muhlenberg College  
 Murphy Jewelry  
 The Neffs National Bank  
 New Castle Lawn & Landscape  
 NewEdge Wealth  
 Niagra Bottling  
 The Nolf-Unger Fund for Senior Living of the  
 Berks County Community Foundation  
 The Pampered Chef  
 Parkside Ventures LP  
 Penn Community Bank  
 Pennsylvania Association of Elder Law  
 Attorneys  
 Pennsylvania Sinfonia Orchestra  
 PenTeleData  
 Pet Nanny Plus LLC  
 Philadelphia Museum of Art  
 Phoebe Berks Health Care Center Auxiliary  
 Phoebe Berks Peddler's Shop  
 Phoebe Floral & Home Decor  
 Pinnacle Advisor Group  
 PJ Whelihans  
 PNC Bank  
 Pott's Hotdogs  
 Premier Environments Inc.  
 Prologis  
 Putt U Miniature Golf  
 QNB Bank  
 R.S. Mowery Construction  
 Radio Maintenance Inc.  
 Reading Fightin Phils Baseball  
 Reading Royals  
 Red Robin Lehigh Valley Restaurant Group  
 Renaissance Consulting Group Inc.  
 Rich Mar Florist  
 RKL LLP  
 The Roost  
 Rose Family Charitable Fund  
 Salt Hair Studio  
 Schneider Downs & Company Inc.  
 The Scholler Foundation  
 Seidel Family Fund of the Berks County  
 Community Foundation

\* Deceased

Senior Helpers  
 Sequential Tech  
 Service Electric Cable TV  
 Sherman Theater  
 ShopRite of Hunterdon County Inc.  
 Skirmish USA  
 The Harold P. Smith Fund  
 St. Luke's Home Health & Hospice  
 Stevens & Lee  
 Stitzel Family Funeral Homes  
 Strands Hair Salon  
 The Terrace at Phoebe Allentown  
 Residents Association  
 Texas Roadhouse  
 The Wilber Mansion  
 Thomson's Meat Market  
 Thrivent Charitable Impact & Investing  
 Toshiba Business Solutions  
 Touchstone Theatre  
 Traditions of America at Saucon Valley  
 Trago Mechanical Inc.  
 Trey Mar Mechanical  
 Tridentcare  
 Trilogy Construction Management Inc.  
 Truist  
 United Healthcare  
 United Way of the Greater Lehigh Valley  
 United Way of Greater Philadelphia and  
 Southern New Jersey  
 United Way of Southwestern Pennsylvania  
 Unity Bank  
 Vanderwalt Construction  
 Wally's Deli  
 Warfel Construction Company  
 Watkins Architect LTD  
 Wedgewood Golf Course  
 Werts Cafe  
 Willow Street Pub  
 Wind Creek  
 Working Dog Press  
 The Wright Family Foundation  
 Zoellner Arts Center

## CONGREGATIONS

### PENNSYLVANIA CENTRAL CONFERENCE

Canoe Camp UCC (Mansfield)  
 David's UCC (Herndon)  
 First UCC (Middleburg)  
 Paradise UCC (Milton)  
 Salem UCC (Campbelltown)  
 Salem UCC (Elizabethville)  
 St. John's UCC (Lewisburg)  
 St. John's UCC (Shamokin)  
 Trinity UCC (East Petersburg)  
 Trinity UCC (Watsontown)  
 Verdilla UCC (Selinsgrove)

### PENNSYLVANIA NORTHEAST CONFERENCE

Ben Salem United Church  
 of Christ (Andreas)  
 Bethany UCC (Bethlehem)  
 Christ Church UCC (Bethlehem)  
 Christ UCC (Bath)  
 Christ UCC (Conyngham)  
 Christ UCC (Jim Thorpe)  
 Church of the  
 Good Shepherd UCC (Alburtis)  
 Ebenezer UCC (New Tripoli)  
 Emmanuel UCC (Allentown)  
 Emmanuel UCC (Bowmanstown)  
 Emmanuel UCC (Dorrance)  
 Faith UCC (Center Valley)  
 First UCC (Easton)  
 Fork's UCC (Stockertown)  
 Good Shepherd UCC (Slatedale)  
 Grace UCC (Northampton)  
 Greenawalds UCC (Allentown)  
 Jerusalem Western  
 Salisbury UCC (Allentown)  
 Jordan UCC (Allentown)  
 Longswamp UCC (Mertztown)  
 Lower Saucon UCC (Hellertown)  
 New Creation Church of Christ  
 Old Zionsville UCC (Old Zionsville)  
 Orangeville UCC (Orangeville)  
 Penn Northeast Conference  
 Salem UCC (Allentown)  
 Salem UCC (Weatherly)  
 Solomon's UCC (Macungie)  
 St. John's UCC (Allentown)  
 St. John's UCC (Fullerton)  
 St. John's UCC (Howertown)  
 St. John's UCC (Laurys Station)  
 St. John's UCC (Mickleys)  
 St. John's UCC (Morgan Hill)  
 St. John's UCC (Nazareth)  
 St. John's UCC (Slatington)  
 St. Mark's UCC (Allentown)  
 St. Matthew's UCC (Kunkletown)  
 St. Matthew's UCC (Weatherly)  
 St. Paul's UCC (Big Creek Lehighon)  
 St. Paul's UCC (Indianland)  
 St. Paul's UCC (Swiftwater)  
 St. Pauls UCC (Seiberlingsville)  
 St. Peter's UCC (Mantzville)  
 St. Peter's Union Church (Lynnville)  
 Trinity UCC (Bethlehem)  
 Trinity UCC (Bloomsburg)  
 Trinity UCC (Great Swamp)  
 Trinity UCC (Pleasant Valley)  
 Union UCC (Neffs)  
 Zion UCC (Lehighon)  
 Zion UCC (Nanticoke)  
 Zion UCC (Orangeville)  
 Zion's Reformed UCC (Ashland)

### PENNSYLVANIA SOUTHEAST CONFERENCE

Allegheny UCC (Alleghenyville)  
 Christ Church UCC (Norristown)  
 Faith Reformed UCC (Landingville)  
 First Reformed Church UCC (Hamburg)  
 First UCC (Quakertown)  
 Freidens Church of Lenhartsville  
 Glenside UCC (Glenside)  
 Grace Trinity UCC (Philadelphia)  
 Heidelberg UCC (Schwenksville)  
 New Goshenhoppen UCC  
 (East Greenville)  
 Pennsylvania Southeast Conference  
 Pleasantville UCC (Chalfont)  
 Reformed Church of the  
 Ascension UCC (Jeffersonville)  
 Shenkel UCC (Pottstown)  
 St. Andrew's UCC (Perkasie)  
 St. Andrew's UCC (Reading)  
 St. John's UCC (Lansdale)  
 St. John's UCC (Richlandtown)  
 St. John's UCC (Schuylkill Haven)  
 St. John's UCC (Orwigsburg)  
 St. Paul's UCC (Fleetwood)  
 St. Paul's UCC (Ringtown)  
 St. Paul's UCC (Sellersville)  
 St. Paul's UCC (Summer Hill)  
 St. Peter's UCC (Orwin)  
 Trinity Reformed UCC (Pottstown)  
 United Church of Christ of Robisonia  
 Zion's UCC (Pottstown)

### OTHER RELATED ORGANIZATIONS

First UCC Womens Guild (Royersford)  
 King's Daughters of the First Reformed  
 Church (Phillipsburg)

## MEMORIALS

Mrs. Pasqua Armetta  
 Mrs. Grace E. Baker  
 Harold & Ruth Balthaser  
 Ms. Ruth A. Barber  
 Mr. Vincent Bartosik  
 Ms. Clara N. Bell  
 Catherine Bingaman  
 Mrs. Doris Blazosky  
 Mrs. Ann Blumer  
 Ms. Alice Bodisch  
 Elsie Bogh  
 Madeline Bohner  
 Mr. Albert Bosold  
 Ms. Dollie E. Bossler  
 Ms. Patricia Boyer  
 Ms. Viola Braucher  
 Robert C. & Mary S. Bright  
 Mr. George C. Brown  
 Mr. & Mrs. Henry Brumbach  
 Ms. Martha Caldwell  
 Ms. Olga Carmona  
 Sarah Ann Carswell

\* Deceased

Ms. Frances Cinoa  
 Ms. Theresa E. Clark  
 Mrs. Midge Coker  
 Hazel Collins  
 Ms. Leanora Coraluzzi  
 Ms. Audrie Davis  
 May F. Davis  
 The Rev. Kenneth Dearstyne Sr.  
 Ruth Landmesser Dearstyne  
 Ms. Ruth Decker  
 Ms. Anna Drago  
 Mary Dreisbach  
 Mary P. Eckman  
 William "Bill" Ellis  
 Mr. Bernard Ferenchak  
 Ms. Patricia Fessler  
 Mrs. & Mr. Mildred C. Fink  
 Mrs. Dorothy M. Fink  
 Mr. William A. Frederick  
 Mrs. Gladys E. Freund  
 Frederick & Catherine Gangewer  
 Mrs. Elizabeth Geiger  
 Paul Gerhart  
 Mrs. Beatrice A. Glose  
 The Rev. Harry J. Goos  
 Mrs. Ruth W. Grimes  
 Mr. Rocky Groller  
 Joseph Gruber  
 The Rev. Dr. Paul P. Haas &  
   Mrs. Mildred K. Haas  
 Mrs. Elaine P. Haas  
 Mrs. Susan D. Hacker  
 Mr. Paul Hall  
 Esther & Lester Happel  
 Mrs. Esther Happel  
 Ms. Margaret Hardy  
 David F. Hassler  
 Mr. Harry Hebig  
 Mrs. Alma M. Heist  
 Mrs. Flossie Heller  
 Nancy Hillegass  
 Mrs. Anna Hock  
 Mr. Lee C. Hollendonner  
 Melvin & Jean Hoover  
 John N. Jacobs  
 Robert S. Johnson  
 Mr. David R. Kadingo Jr.  
 Mrs. Doris T. Keehn  
 Mr. Larry Kimball  
 Grace King  
 Mrs. Ruby Kistler  
 Mr. Francis Krajcir  
 Mr. & Mrs. Robert Kramer  
 Roland W. Kratz  
 The Rev. Walter Krieger  
 Sister Meta Kueck  
 Ms. Lucille Lang  
 Anna Marie Lang  
 Mr. Marvin L. Lehman  
 John D. Leidich

Paul & Mary Jane Lentz  
 Gladys M. Lerch  
 Austin & Ethel Lerch  
 Mr. Arland Lichtenwalner  
 Ms. Marilyn Lockhart  
 Adella M. Ludwig  
 Irene K. Lupco  
 Mrs. Lorraine Makos  
 Mr. Russell Marker  
 Mrs. Elfriede Marschewski  
 Elwood L. Matten  
 Marguerite E. McEvoy  
 Mr. Donald F. Melcher &  
 Mrs. Gloria S. Melcher  
 Alice Mengel  
 Mr. Lee Merkel  
 The Rev. George J. Miller  
 Ms. Dorothy N. Wilkinson Mirin  
 Mr. Edward Moffett  
 Ms. June Molchany  
 Ms. Claire Moran  
 Mrs. Karen M. Morgan  
 Mr. & Mrs. L. Stratton Mosser  
 Ms. Verna Moyer  
 Shawn Moyer  
 Helen Muhaw  
 Ms. Ellen T. Mulcahy  
 Mr. Elmer Musselman  
 Mr. Ray H. Myers  
 Dorine P. Nehf  
 Mr. & Mrs. Earl S. Neubert  
 Fay Nicholas  
 Mr. Donald R. Ohl Sr.  
 Mr. John F. Ori  
 Mr. Don C. Patt  
 Helen Pearce  
 Dorothy F. Pezoldt  
 Kathryn Pfeil  
 Joseph Pokorny  
 Ms. June Pope  
 Ms. Audrey Quickel  
 The Rev. John Ragsdale  
 Mr. & Mrs. Albert Reed  
 Mrs. Nancy Reichert &  
   Mr. Kenneth Reichert  
 Mr. Kenneth Reichert  
 Gordon Rose  
 Mrs. Betty Ruppert  
 Mrs. Ruth R. Schaefer  
 Mr. Paul Schaeffer  
 Helen Schilling  
 Earl Schlegel  
 Mr. Martin E. Schmauder  
 Mrs. Jeanette Schmauder  
 Ms. Phyllis M. Schmoyer  
 Mr. Frank Schulz  
 Mrs. Frances Seidel  
 Ms. Althea Sell  
 Mr. Louis Serva  
 Helen Shaffer

Mr. Timothy Shisler  
 Ms. Ruth Shoemaker  
 Mr. Wayne Sieger  
 Miss Rachel Simmons  
 Mr. Nelson C. Simonson  
 William & Edna Sine  
 Ms. Pearl Smigo  
 Winifred & George Snyder  
 Ms. Julia Snyder  
 Ms. Marilyn Solomon  
 Mr. Michael Spagna  
 Elaine Spence  
 Mr. & Mrs. Michael Stehman  
 Ms. Marian Stewart  
 Norma A. Stoudt  
 Ms. Mary R. Stranieri  
 Betty Suitoer  
 Ethel Tenges  
 The Rev. Dr. Albert E. Teske &  
   Mrs. Mabel A. Teske  
 A. Cooke Thomas &  
   Evelyn S. Thomas  
 Ms. Ruth Trimble  
 Mr. John Vanyur Sr.  
 Dr. Clifford & Mrs. Doris Wagner  
 Ms. Doris Weikel  
 Ms. Lillian Weitzel  
 Gail Whiskeyman  
 Ms. Lucy H. Whitehead  
 Eleanor Williams  
 Ms. Sarah Williams  
 Mr. Fred W. Wolf  
 Mrs. Mary Jane Wolf  
 Ms. Lillian A. Wolf  
 Ms. Grace Wotring  
 Ms. Helen E. Wotring  
 Mr. Curtis W. Yackera  
 Cora Yarborough  
 The Rev. & Mrs. George H. Yoder  
 Ms. Janice F. Yorgey  
 Vaughn Young  
 Mildred Zellner  
 Mrs. Shirley M. Zodel

## HONORARIA

The Rev. Dr. Hilary Barrett  
 CarePatrol of the Lehigh Valley &  
   Upper Bucks  
 Mrs. Mae E. Clay  
 Mr. James Coker  
 Ms. Ellen Davis  
 Mr. Louis J. Frank  
 Mrs. Ruth Gerhart  
 Shirley A. Gower  
 Amber Guzman  
 Ms. Carole Hoffman  
 Mrs. Joan Kimball  
 Ms. Jennifer Koebert  
 Ms. Mimi Leinbach

\* Deceased

# Annual Report 2025 | THANKING OUR PARTNERS

Mrs. Susan Myers  
Phoebe Berks Staff  
Bette-Mae Planer  
Mr. & Mrs. Ronald G. Pope  
Ms. Jo Ann Raymiz  
Ms. Suzanne Romig  
Lester Schaeffer  
Ms. Helen Schmick  
Mrs. Caroline L. Simonson  
Ms. Karen Sinkovits  
Ms. Theresa Snider

Fund for Pastoral Care  
Kathryn E. Fidler Endowment  
for Berks HCC  
The Rev. Dr. Paul P. and  
Mildred K. Haas Fund  
William H. Hacker Fund  
The Paul K. and Madlyn A. Haines Fund  
Grant E. Harrity Fund  
The Rev. Dr. Grant Harrity  
Endowed Scholarship Fund  
George and Cora Hausman Fund  
Evelyn M. Hawk Fund  
Robert E. and Ellamae Hess  
Endowment Fund  
Norwood N. and Doris M. Kern Fund  
The Rev. Dr. Earlin &  
The Rev. Anna Lutz Endowment  
Markley Trust Income  
Dr. Ralph F. and Edith Iffland Merkle Fund  
Miller Family Fund  
Robert W. and Judith I. Miller Family Fund  
Sara K. Miller Perpetual Memorial Fund  
Roberta Miner Allentown Endowment  
Howard and Doris Paine Endowment for  
Dementia Care at Berks

Pastoral Care Endowment for Phoebe Berks  
Pastoral Care Endowment Fund  
Phoebe Berks HCC Endowment  
Phoebe Devitt Homes Bequests  
Phoebe Devitt Homes General Endowment  
Phoebe Home Perm Restricted Estate  
Phoebe Home Trusts  
Jami & Mitchell Possinger  
Pastoral Care Fund  
David & Nancy Renshaw Fund  
The Rider Family Endowment  
for Pastoral Care at Berks  
Anna E. Schneider Memorial  
Endowment for Phoebe Wyncote  
Martha Seibert Fund  
St. Paul's Memorial Endowment for  
Charitable Care  
Staff Skills Investment Endowment Fund  
Dr. & Mrs. J. O. Steeley Family Fund  
Scott R. and Mary O. Stevenson  
Family Fund  
Wyncote Home Endowment Fund

## ENDOWMENTS

Mary Carn Buchanan Fund for Wyncote  
Mary Carn & William Buchanan Fund for  
Phoebe Allentown  
Charitable Care Endowment  
Charitable Care Phoebe  
Allentown Endowment  
Joseph E. and Marjorie S. Correll Fund  
The Audrie M. Davis Memorial Scholarship  
Donley Staff Skills Investment Fund  
Endowment for Clinical Pastoral Education  
The Michael and Lisa Fichera Endowed



**SAVE THE DATE**

SAUCON VALLEY COUNTRY CLUB  
PRESENTS THE 18<sup>TH</sup> ANNUAL

**PHOEBE GOLF  
TOURNAMENT**

**MONDAY, AUGUST 10, 2026**



Saucon Valley  
Country Club

 Phoebe

# LOVE, PHOEBE



## Do you love Phoebe Ministries and believe in our future?

**Join others who have made plans** to support Phoebe by becoming a member of the Legacy Society. It starts by raising your hand.

If you have included Phoebe in your will or trust, or as a beneficiary of a retirement asset, we encourage you to let us know. Whether you'd like to shout it out and inspire others or whisper it to us and remain anonymous, we'd love to know if you have included Phoebe in your estate plans, or if you would like to do so. Letting us know will enable us to answer your questions, ensure your gift will be used as you wish, properly thank you, and welcome you to the **Phoebe Ministries' Legacy Society**.

To share your intentions, document your gift, or to explore giving options, visit [myphoebelegacy.org](https://myphoebelegacy.org) or call **610-794-5132**.

---

LEGACY  
SOCIETY

---





1925 W. Turner Street  
Allentown, PA 18104  
1-800-453-8814  
Phoebe.org

 [facebook.com/phoebeservingseniors](https://facebook.com/phoebeservingseniors)  
[facebook.com/chestnutridgeatrodale](https://facebook.com/chestnutridgeatrodale)

 [youtube.com/phoebeservingseniors](https://youtube.com/phoebeservingseniors)

 [linkedin.com/company/phoebe-ministries](https://linkedin.com/company/phoebe-ministries)

 [phoebeservingseniors](https://instagram.com/phoebeservingseniors)



## *Live Fully. Live Phoebe.*

Phoebe is dedicated to helping Pennsylvania's seniors get more out of each day while having all the lifestyle and health care services and resources they need in one place. Whether for yourself or a loved one, our communities are designed to meet the diverse lifestyle needs while fostering opportunities to be active and engaged in a close-knit setting.

### Services for Residents include:

- Independent Living
- Personal Care
- Skilled Nursing
- Rehabilitation Services
- Memory Support
- Immedicare
- Mental Health Services
- TeleHealth

To learn about what Phoebe offers, scan the QR Code and fill out the short form to receive more information.

